

Model Mayhem

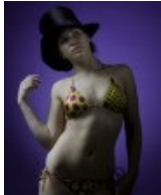
[main](#)
[browse](#)
[forums](#)
[shout box](#)
[info](#)
[my stuff](#)
[logout](#)

Jump to MM#

[Forums](#) > [Photography Talk](#) > **Lighting Setup Tutorials: basic to advanced**

[Reply](#)

1 [2](#) [3](#) [4](#) [5](#) [last](#)



PHOTOGRAPHER

[LightLab Studios](#)

Male

Location: Montana

Posts: 295

Please post your lighting setups to share with other photographers. Try to include a picture or diagram of the setup along with the final capture. Also try to include any important lighting ratios, as well as camera/lens info. If there is extensive post work, please describe.

I hope you will find this an informative and useful thread. I'd rather focus on sharing tips and techniques than debating what you like or don't like about particular lighting setups. No hijacking or flaming, please.

Thanks and enjoy,
Tom

LINK FOR MAKING LIGHTING DIAGRAMS
(provided by member Brandon Ching):

Try this: (courtesy of kevin kertz)
<http://www.fredmiranda.com/forum/topic/446987>

To use...

- 1) Download file LightingSetup.psd.zip (size 200k)
- 2) Unarchive the Zip file
- 3) Open the Photoshop file: LightingSetup.psd. (size 500k)
- 4) The file defaults with a Background, Subject and 35mm Camera.
- 5) To view (add) an item, open the appropriate folder and click on the item (as seen below). You click on the "eye" icon to make it visible or to hide it.
- 6) Move and rotate into place.
- 7) Save a copy of your finished setup. Don't save over original file (for future use).

Updates:

Sept. 13, 2006 - Original file

Sept. 25, 2006 - Version (1.1) Added Strip Softboxes and Hairlights

Restrictions:

- For personal use and to share your setups only!
- NO commercial use
- Please leave the copyright on ALL setups...Thanks!

Dec 08 06 12:29 am [Quote](#)



PHOTOGRAPHER

[LightLab Studios](#)

Male

Location: Montana

Posts: 295

I'll start. This setup is courtesy of Richard Warren's Fashion Workshop.

Equipment and Materials:

- white seamless background
- model approx 15 ft in front of background
- background lit by beauty dish w/blue gel
- model lit by 48" white umbrella
- additional partial diffusion on umbrella using rolux tufflux fabric
- two fill cards (placement seen in pics)
- nikon d2x w/50mm

Ratios

- background about 2 stops below key

Post-Production

- minimal: basic post on skin, contrast, and color





Dec 08 06 12:30 am [Quote](#)



PHOTOGRAPHER

[Craig Thomson](#)

Male

Great topic, thank you Tom. Nice photo.

Location: Washington

Posts: 4,887

Dec 08 06 12:33 am [Quote](#)



PHOTOGRAPHER

[Jeff Genung](#)

Male

Location: Texas

Posts: 403

Where was light to face coming from? I see the umbrella above, but below and to the right?

edit--looking at it again, I guess she was back enough from the umbrella with the card that it is just that light?

Dec 08 06 12:51 am [Quote](#)



PHOTOGRAPHER

[Craig Thomson](#)

Male

Location: Washington

Posts: 4,887

Looks like it's bouncing off the foam core on the left.

Dec 08 06 12:53 am [Quote](#)



PHOTOGRAPHER

[Jeff Genung](#)

Male

Location: Texas

Posts: 403

Need a diagram, I think you are right about the bounce there, but can't tell if thats 45deg or 90deg to model.---

Dec 08 06 12:57 am [Quote](#)



The setup pic was taken from the side - sorry about the angle. The umbrella is almost directly to model's left (or camera right). The direction the model is looking in the setup pic would be facing the photographer during the shoot. In the final capture, she's looking just below the umbrella. Hope that helps.

PHOTOGRAPHER

LightLab Studios

Male

Location: Montana

Posts: 295

Dec 08 06 01:04 am [Quote](#)

He's also using the bottom of the umbrella with the soft spill light. Very nice soft light. With light like that, you don't need to Potatoshop the skin.

PHOTOGRAPHER

Craig Thomson

Male

Location: Washington

Posts: 4,887

Dec 08 06 01:06 am [Quote](#)

This is cool. Hard to add to it without documentary photos - of which I have none

PHOTOGRAPHER

digital Artform

Male

Location: California

Posts: 2,056

Dec 08 06 01:06 am [Quote](#)

Take a couple next time you shoot.

PHOTOGRAPHER

LightLab Studios

Male

Location: Montana

Posts: 295

Dec 08 06 01:15 am [Quote](#)



PHOTOGRAPHER

[LightLab Studios](#)

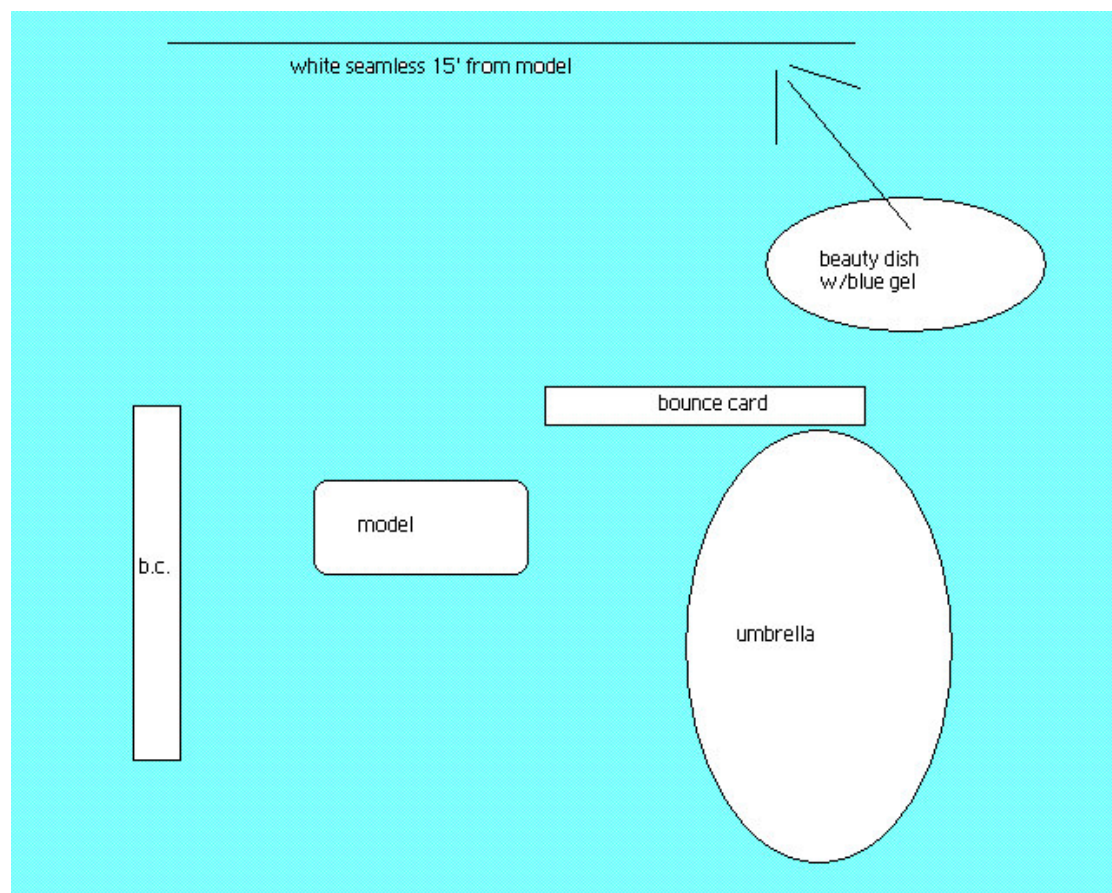
Male

Location:

Montana

Posts: 295

I hate making diagrams...



Dec 08 06 01:18 am [Quote](#)



PHOTOGRAPHER

[LightLab Studios](#)

Male

Location: Montana

Posts: 295

One more before bed... again courtesy of Richard Warren Fashion Workshop.

Equipment and Materials:

- white seamless
- four white umbrellas
- two acute 1200R packs
- two large 6'x6' scrim jims w/white panels
- nikon d2x w/50mm f1.4
- 1/125, f4.5, ISO 100

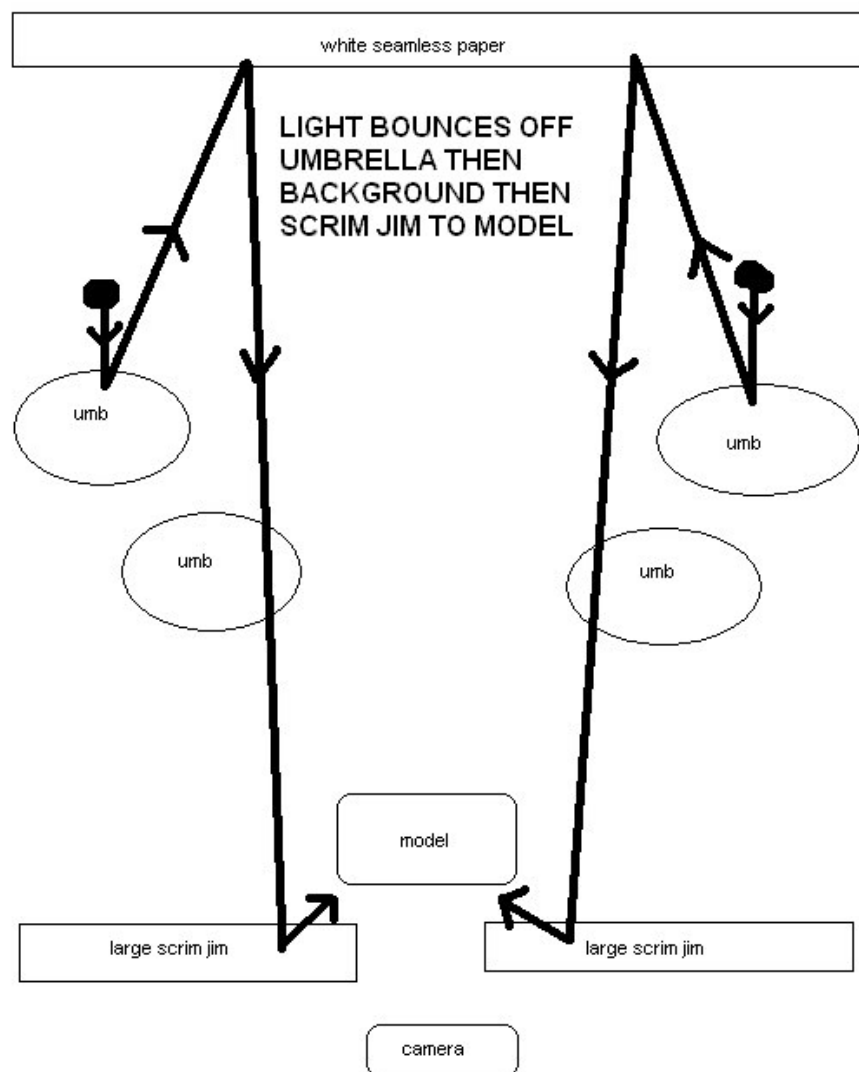
Ratios:

- light is bounced 3x: off umbrella, off background, off scrim jim to model
- triple bounce gives extremely even, diffuse light for exceptional skin tones; highlights wrap from back to front; catch light from scrim jim in eyes is subtle and fills iris
- lights were at full power
- approx. 5 stop difference b/w background and model

Post-Production:

- minimal work on skin, contrast, and color







Dec 08 06 02:46 am [Quote](#)



PHOTOGRAPHER

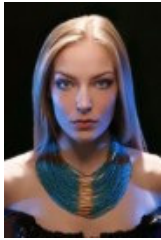
[Craig Thomson](#)

Male

Very nice Tom, thank you again.
ps, much better diagram!!

Location: Washington
Posts: 4,887

Dec 08 06 02:52 am [Quote](#)



PHOTOGRAPHER

[robert christopher](#)

Male

Location: Washington

Posts: 681

wow these are great. i have loved both these images since i first saw them, thank you so much for the diagrams.

Dec 08 06 02:54 am [Quote](#)



PHOTOGRAPHER

[robert christopher](#)

Male

Location: Washington

Posts: 681

so the bounce card on the softbox in diagram one's sole purpose is to keep from spilling onto the background?

Dec 08 06 03:04 am [Quote](#)



PHOTOGRAPHER

[LightLab Studios](#)

Male

Location: Montana

Posts: 295

robert christopher wrote:

so the bounce card on the softbox in diagram one's sole purpose is to keep from spilling onto the background?

yes, that's the primary purpose. it also adds a little more light on the model (probably a 1/3 to 1/2 stop). a black card would have been used otherwise.

Dec 08 06 03:12 am [Quote](#)



PHOTOGRAPHER

Brandon Ching

Male

Location: Hawaii

Posts: 717

LightLab Studios wrote:

I hate making diagrams...

Try this: (courtesy of kevin kertz)

<http://www.fredmiranda.com/forum/topic/446987>

To use...

- 1) Download file LightingSetup.psd.zip (size 200k)
- 2) Unarchive the Zip file
- 3) Open the Photoshop file: LightingSetup.psd. (size 500k)
- 4) The file defaults with a Background, Subject and 35mm Camera.
- 5) To view (add) an item, open the appropriate folder and click on the item (as seen below). You click on the "eye" icon to make it visible or to hide it.
- 6) Move and rotate into place.
- 7) Save a copy of your finished setup. Don't save over original file (for future use).

Updates:

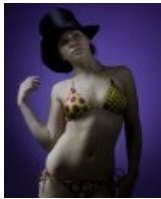
Sept. 13, 2006 - Original file

Sept. 25, 2006 - Version (1.1) Added Strip Softboxes and Hairlights

Restrictions:

- For personal use and to share your setups only!
- NO commercial use
- Please leave the copyright on ALL setups...Thanks!

Dec 08 06 04:03 am [Edit](#) [Quote](#)



PHOTOGRAPHER

LightLab Studios

Male

Location: Montana

Posts: 295

Cool. This is very helpful. I'll put it in the OP.

Hope you will show us one of your setups...

Dec 08 06 04:12 am [Quote](#)



PHOTOGRAPHER

LeBrone Wade

Male

Location: British

Columbia

Posts: 106

wonderful, thanks....

Dec 08 06 06:21 am [Quote](#)



PHOTOGRAPHER

[ward](#)

Male

Location: Ontario

Posts: 540

Jim: Thanks for the diagrams. The images are excellent. Cheers, ~ ward ~ 😊

Dec 08 06 06:29 am [Quote](#)



PHOTOGRAPHER

[Dhaniel](#)

Male

Location: Georgia

Posts: 80

Thanks!!

Dec 08 06 09:08 am [Quote](#)



PHOTOGRAPHER

[bzckry foto](#)

Male

Location: Georgia

Posts: 108

This is an older thread that is also very useful.

<http://www.modelmayhem.com/posts.php?th ... amp;page=1>

Dec 08 06 09:49 am [Quote](#)



PHOTOGRAPHER

[Chipshotz](#)

Male

Location: Florida

Posts: 64

Jim-

Thanks for the sharing the wealth. Great images and information!

Dec 08 06 10:21 am [Quote](#)**PHOTOGRAPHER****[LightLab Studios](#)**

Male

Location: Montana

Posts: 295

You are welcome, but my name is Tom. Hoping to see some other contributions by the end of the day...

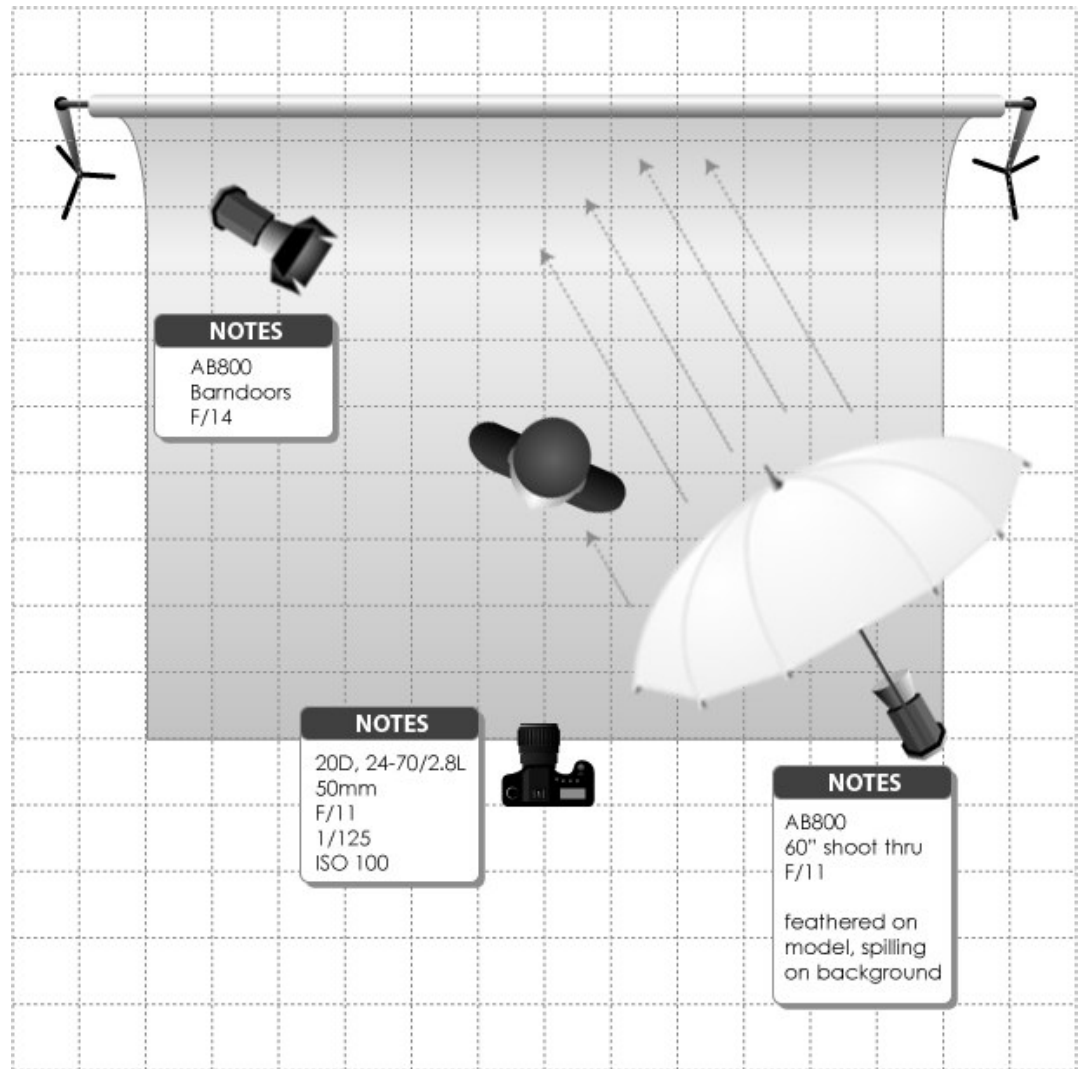
Dec 08 06 11:40 am [Quote](#)**PHOTOGRAPHER****[Brandon Ching](#)**

Male

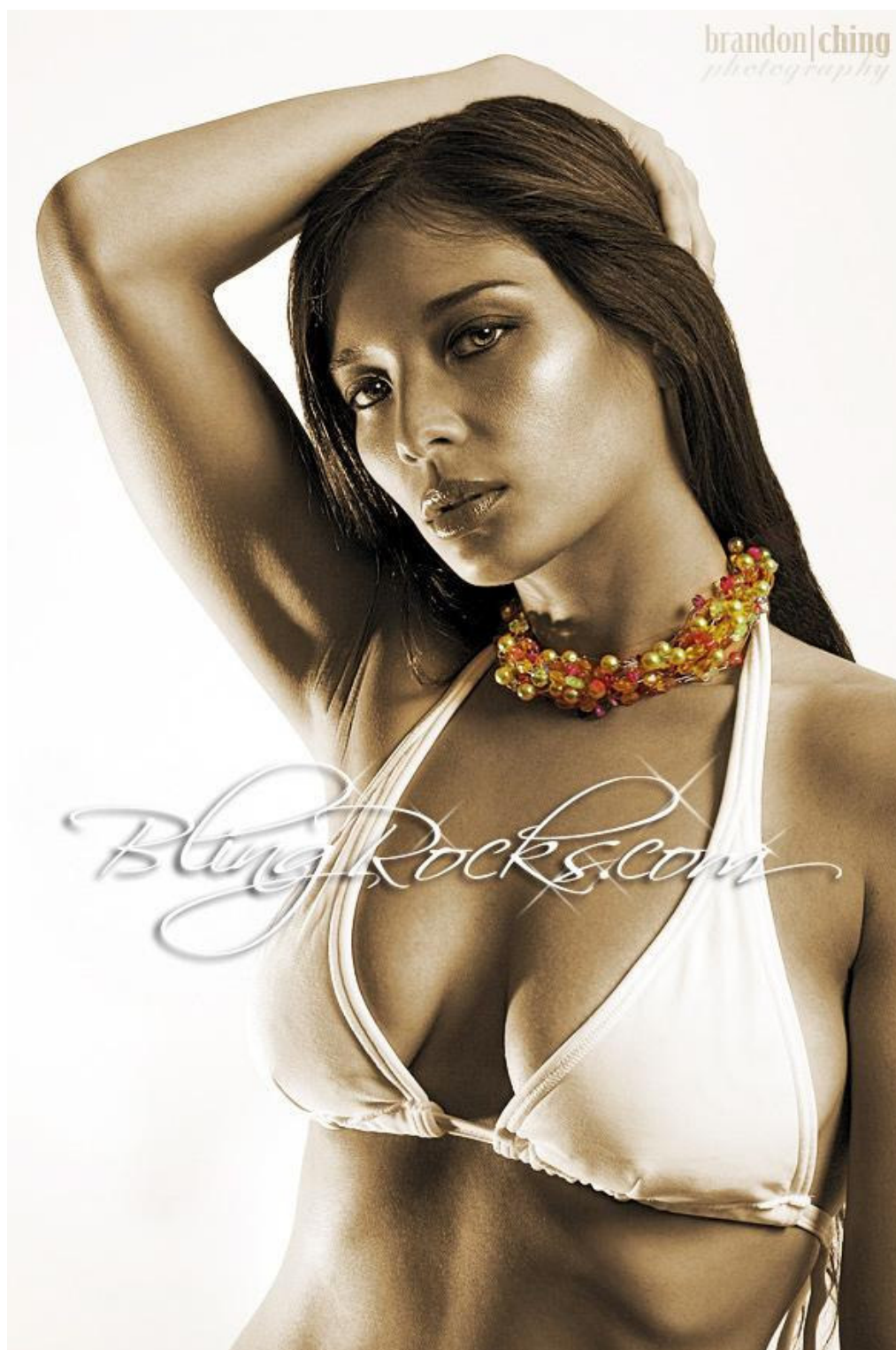
Location: Hawaii

Posts: 717

Alright, I'll bite since I provided the link to the lighting setup psd...



VERSION 1.1 - WWW.KEVINKERTZ.COM - ©2006 KEVIN KERTZ
For personal use and to share your setups only. Not for commercial use. Email suggestions to kevin@kevinkertz.com



Dec 08 06 11:57 am [Edit](#) [Quote](#)



Excellent shots here. I will try to share some examples of my more unorthodox hot light techniques for high key shots when I get some free time! You would be amazed at how I shot my default image with a few store bulbs and a point and shoot camera...

PHOTOGRAPHER

[Scott](#)

Male

Location: Florida

Posts: 406

Dec 08 06 12:44 pm [Quote](#)

PHOTOGRAPHER

[Chris Pun](#)

Male

Location: Ontario

Posts: 68

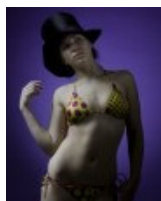
Just out of curiosity, let's say if I don't have enough lighting equipment, what kinda interesting lighting can I get from just the equipment I have (i shoot on location most of the time)

2 ETTL flashes (with off shoe cord)
1 46" Umbrella
1 Reflector

I've been experimenting with different setups but I haven't got the results I want.

I guess my description here is still a bit vague as I didn't really include any concrete details on how I want the exact lighting to be on an object/model.

But any thoughts would help, thanks!

Dec 08 06 12:52 pm [Quote](#)

PHOTOGRAPHER

[LightLab Studios](#)

Male

Location: Montana

Posts: 295

you can use all the basic one and two light setups (many of which will hopefully be posted and diagrammed here). the biggest difference will be the power output of your flashes vs. a power pack or monolight, especially as you lose light output shooting through or bouncing off modifiers. but those two camera flashes are still plenty to do a lot of things. you need to shoot and learn to use them effectively.

Dec 08 06 01:09 pm [Quote](#)

PHOTOGRAPHER

[Chris Pun](#)

Male

Location: Ontario

Posts: 68

LightLab Studios wrote:

you can use all the basic one and two light setups (many of which will hopefully be posted and diagrammed here). the biggest difference will be the power output of your flashes vs. a power pack or monolight, especially as you lose light output shooting through or bouncing off modifiers. but those two camera flashes are still plenty to do a lot of things. you need to shoot and learn to use them effectively.

Cool thanks.

I'm still trying to use the ambient light as the main light and use the other ones as fills

Hopefully I can see more diagrams so I can leech skills off others hahaa

Dec 08 06 01:13 pm [Quote](#)

**PHOTOGRAPHER****ward**

Male

Location: Ontario

Posts: 540

I've used two studio strobes, plus added two party flashes to my rigging when short on lights...if you slave them with peanut slaves, you can sometimes get them to add light where you need to. That's the beauty of trying new things...If it doesn't work for you, try again. If I don't fail sometimes, how can I ever learn ? Right.

Dec 08 06 01:14 pm [Quote](#)**PHOTOGRAPHER****ward**

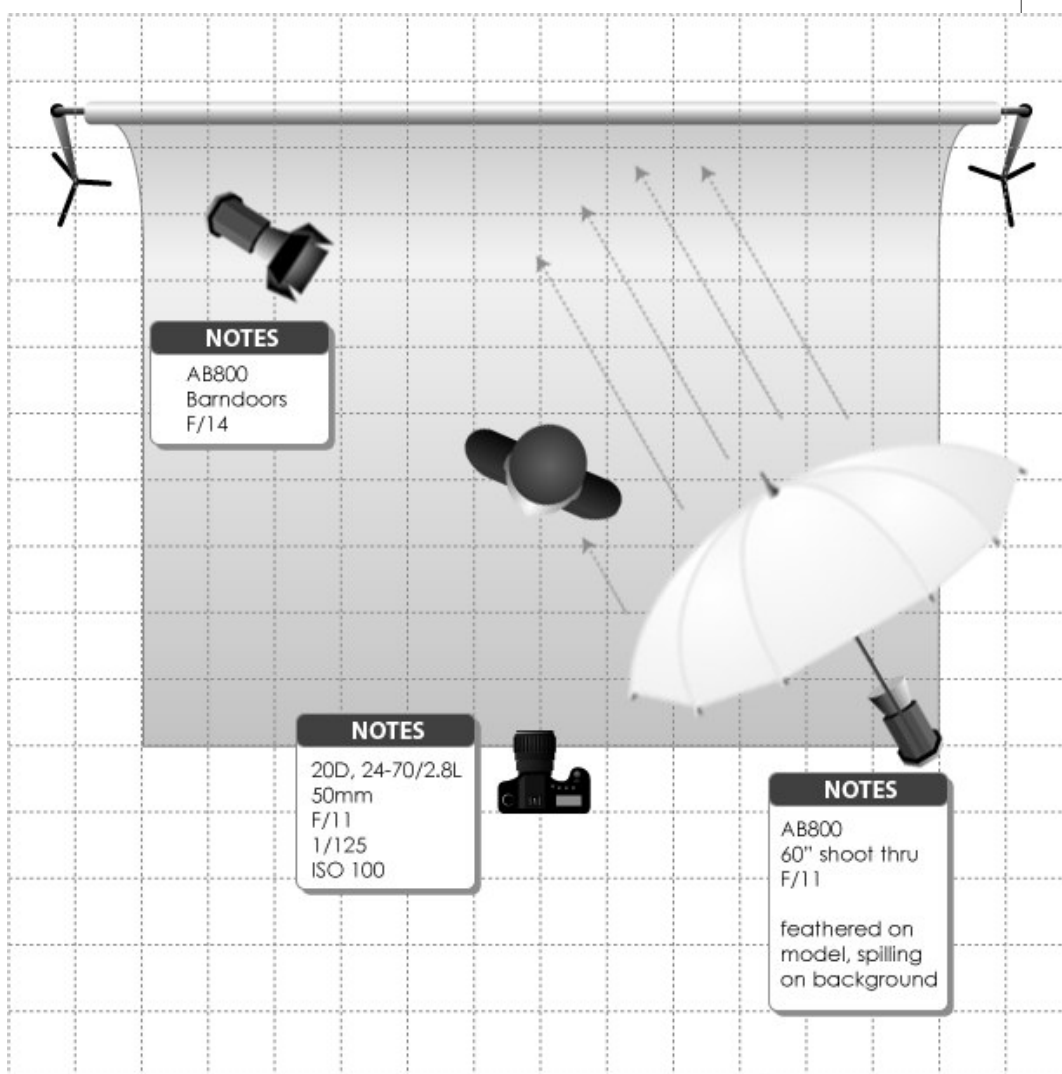
Male

Location: Ontario

Posts: 540

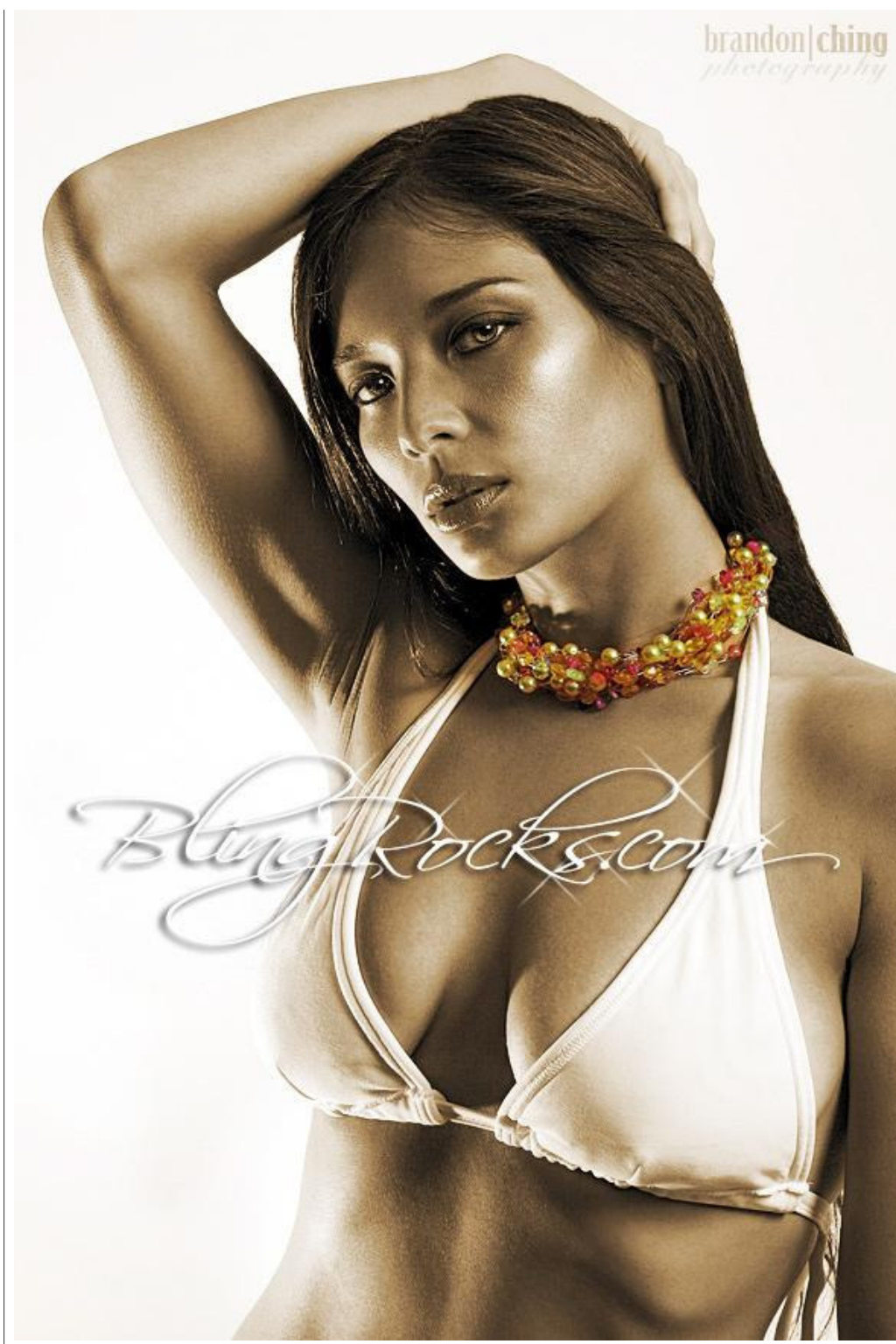
Brandon Ching wrote:

Alright, I'll bite since I provided the link to the lighting setup psd...



VERSION 1.1 - WWW.KEVINKERTZ.COM - ©2006 KEVIN KERTZ

For personal use and to share your setups only. Not for commercial use. Email suggestions to kevin@kevinkertz.com



Love this shot.

Dec 08 06 01:15 pm [Quote](#)

**PHOTOGRAPHER****[ward](#)**

Male

Location: Ontario

Posts: 540

LightLab Studios wrote:

You are welcome, but my name is Tom. Hoping to see some other contributions by the end of the day...

Tom ! sorry...thanks, and whoever Jim is...thank him when you see him...lol...j/k 😊

~ ward ~

Dec 08 06 01:15 pm [Quote](#)**PHOTOGRAPHER****[Chris Pun](#)**

Male

Location: Ontario

Posts: 68

ward wrote:

I've used two studio strobes, plus added two party flashes to my rigging when short on lights...if you slave them with peanut slaves, you can sometimes get them to add light where you need to. That's the beauty of trying new things...If it doesn't work for you, try again. If I don't fail sometimes, how can I ever learn ? Right.

Ya sounds cool to me..

I'll be sure to keep trying them out!

Dec 08 06 01:18 pm [Quote](#)**PHOTOGRAPHER****[Harry Lew](#)**

Male

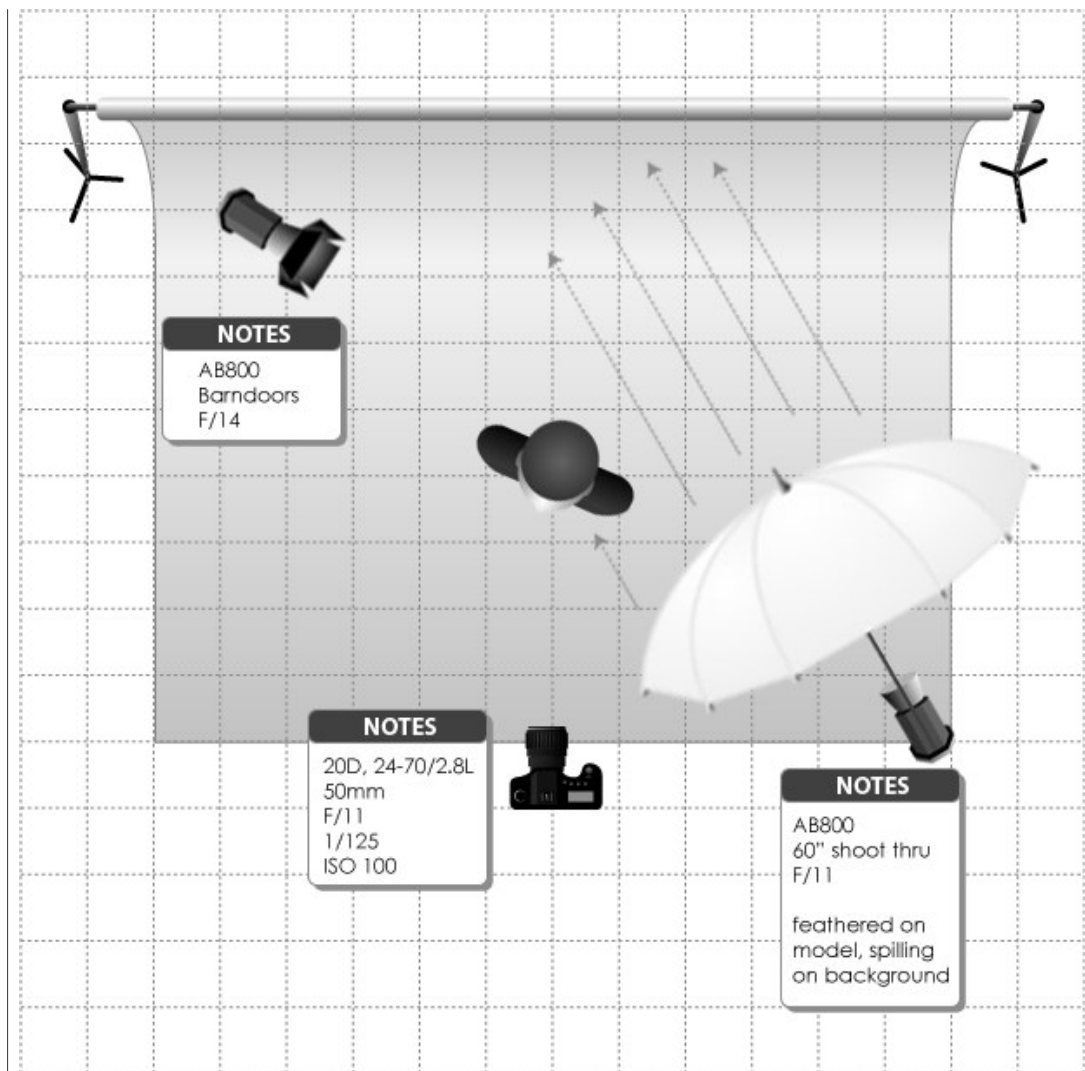
Location: British

Columbia

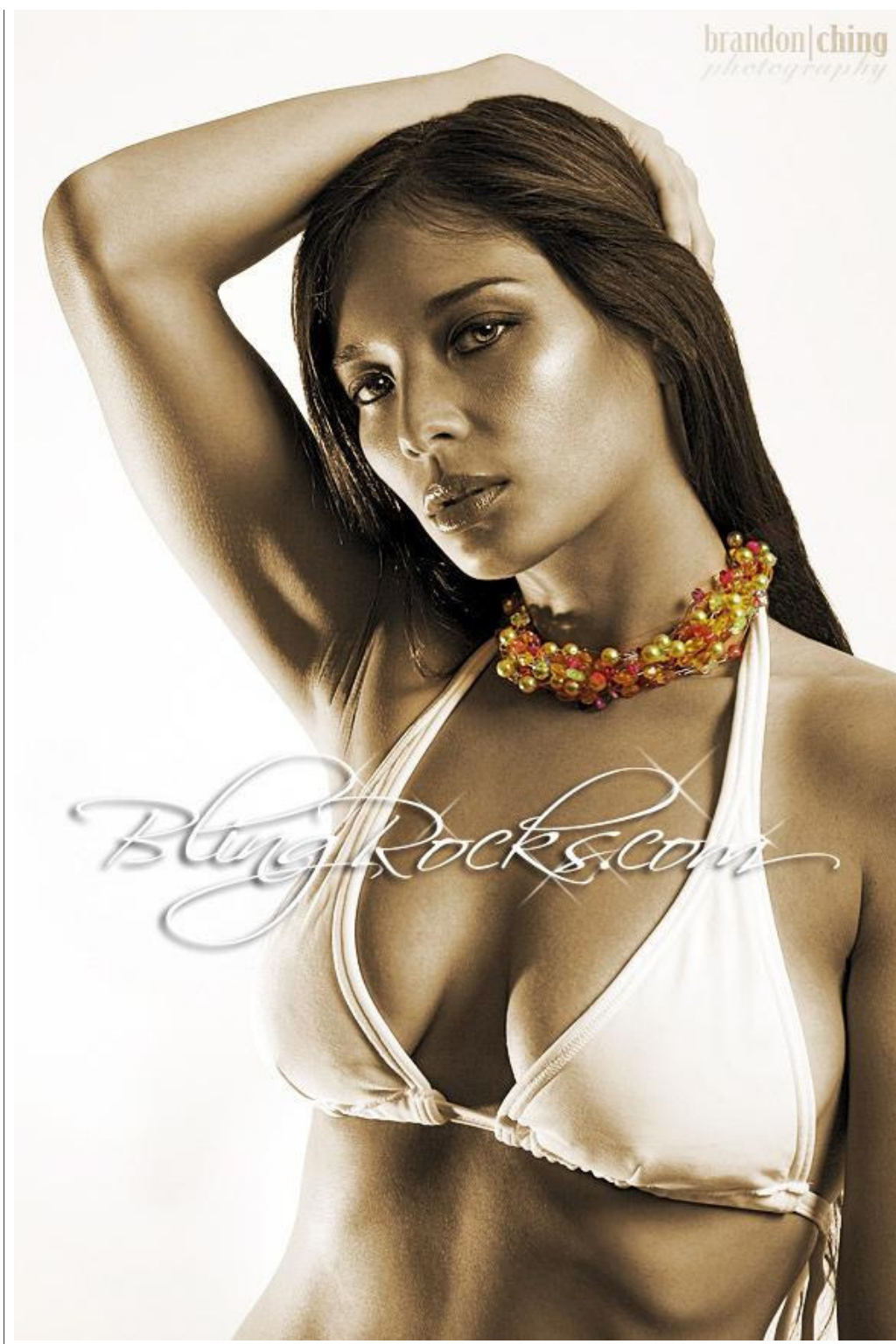
Posts: 52

Brandon Ching wrote:

Alright, I'll bite since I provided the link to the lighting setup psd...



VERSION 1.1 - WWW.KEVINKERTZ.COM - ©2006 KEVIN KERTZ
For personal use and to share your setups only. Not for commercial use. Email suggestions to kevin@kevinkertz.com



Great shot.

What were there ratios between the strobe without the modifier and the umbrella modified strobe?
If there were both at the same power, I would expect to loss about 2 stops as a result of the umbrella.

Dec 08 06 02:00 pm [Quote](#)



PHOTOGRAPHER

Brandon Ching

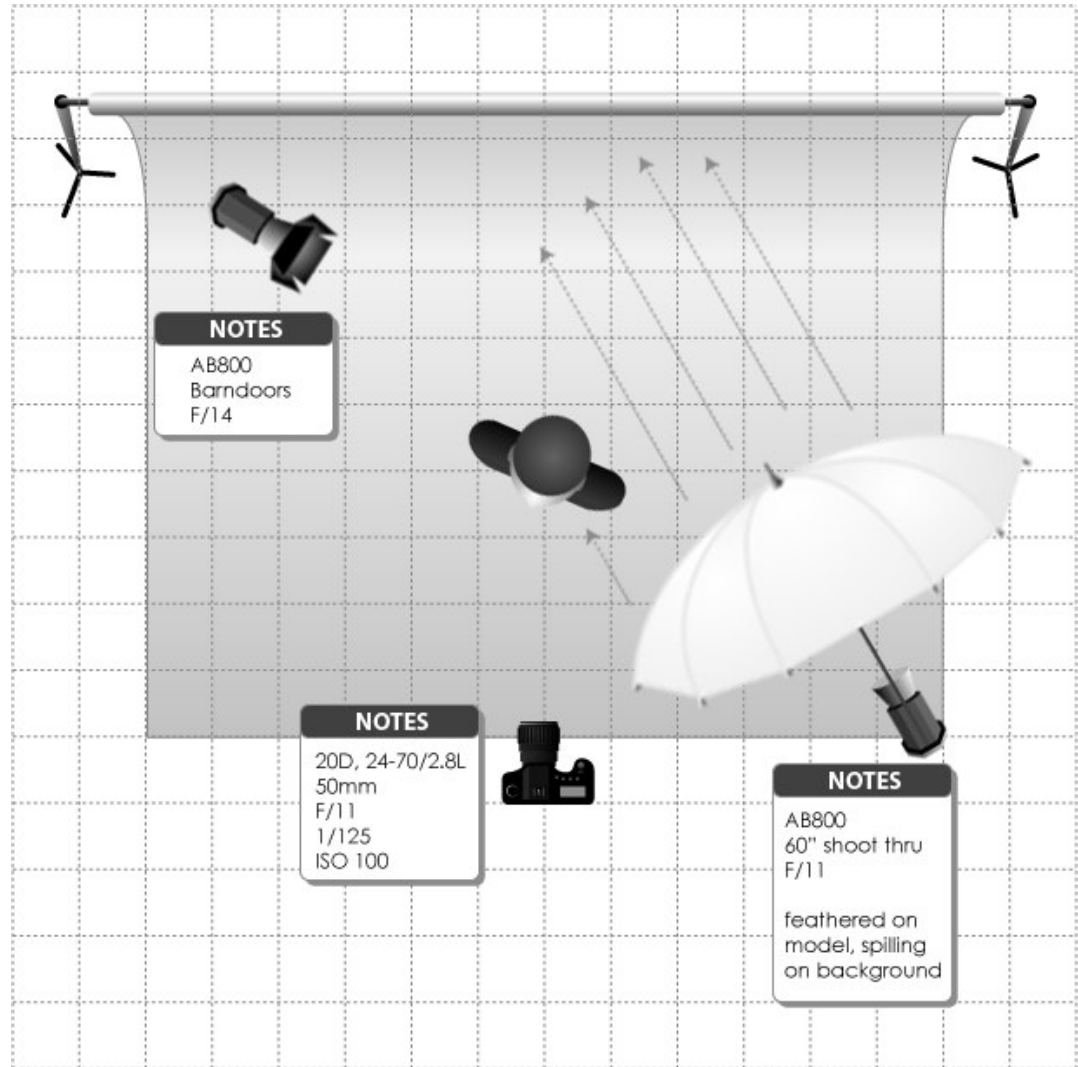
Male

Location: Hawaii

Posts: 717

Honestly, I don't remember.. the shot was taken almost a year ago. If I were to replicate this setup again, I'd probably start off with the kicker at 2:1 to the key. You are right about the loss of light via the umbrella but I take the reading of light with the modifier, not according to what the flash is dialed to.

I've gone back and edited the diagram with my guesstimates at what the lighting was set at. It was probably 1.5:1



VERSION 1.1 - WWW.KEVINKERTZ.COM - ©2006 KEVIN KERTZ
For personal use and to share your setups only. Not for commercial use. Email suggestions to kevin@kevinkertz.com

Dec 08 06 02:23 pm [Edit](#) [Quote](#)



PHOTOGRAPHER

Jeff Genung

Male

Location: Texas

Posts: 403

The link does not work, and cant get Kevin Kertz's website either, but the file is available elsewhere on the internet. Rather freakin' cool and much better than the backs of envelopes and random post-it notes.

Dec 08 06 07:41 pm [Quote](#)

Will post setup during next shoot. Best thread in my opinion...

PHOTOGRAPHER

[Still Moving Photos](#)

Male

Location: New York

Posts: 60

Dec 08 06 09:47 pm [Quote](#)

PHOTOGRAPHER

[\(ANT \) Mgaphoto](#)

Male

Location: California

Posts: 576

Great topic!!! This is what we should see threads on, not how models remove pubic hair!

I may have a studio shoot Sunday, I will do the same with diagrams. For outdoor work I don't use much more than the sun because I have no assistants but if end up using bounce I will show this as well.

The problem you will also find is photographers here, well not all but many, think they have some secret lighting ability lol 😊 unfortunately they don't realize that many techniques are just handed down from one person to another. I went to a great seminar last year where one of the biggest fashion photographers in NY spoke and said it perfect when someone asked if he was afraid showing his techniques, he did a live shoot at this, that someone would steal his style. He commented back to the person that he didn't care because if started seeing his techniques out there all of a sudden he would change his own so he was ahead.

Okay best of luck...again this is a great stuff for photographers.

Dec 08 06 09:54 pm [Quote](#)

PHOTOGRAPHER

[Legacys 7](#)

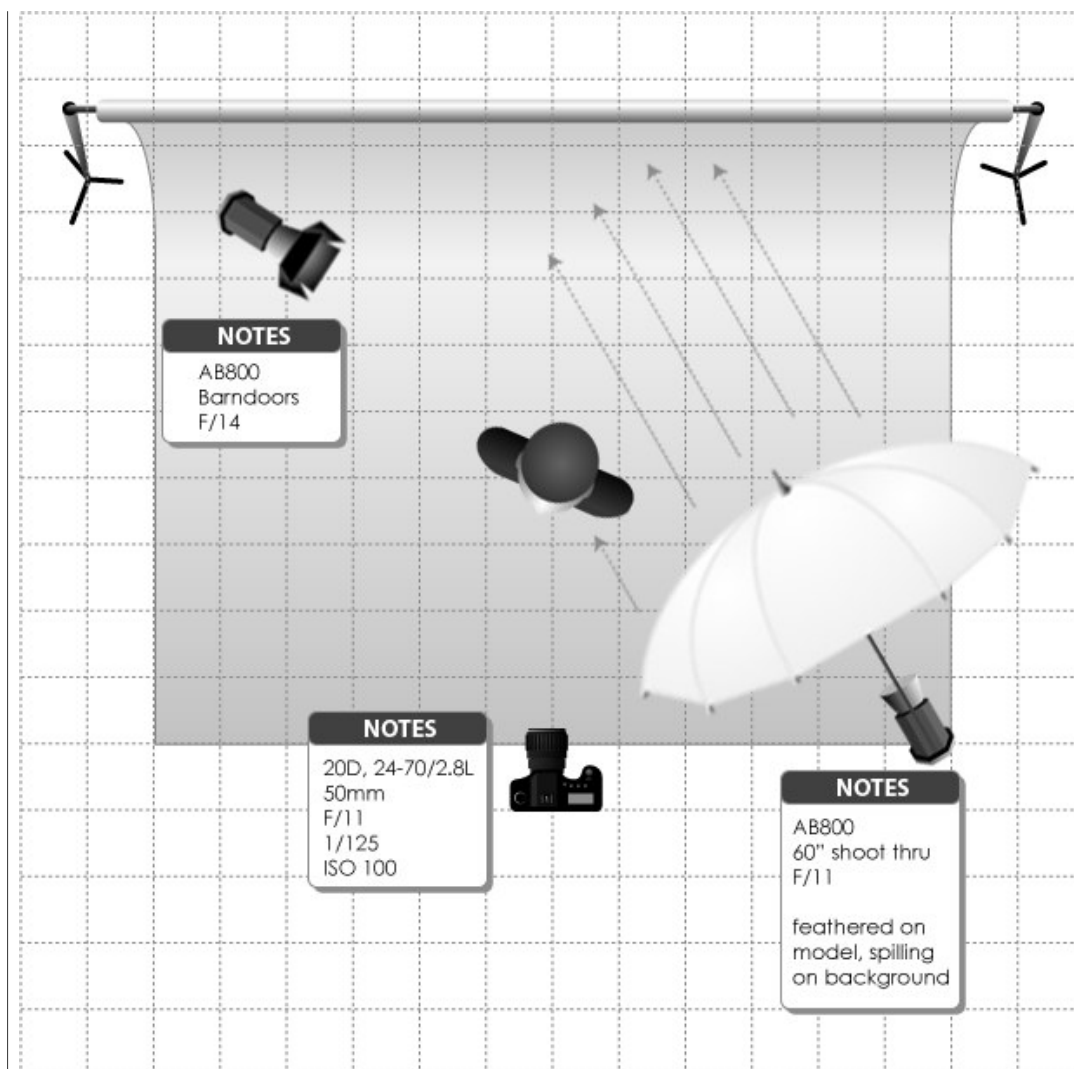
Male

Location:
California

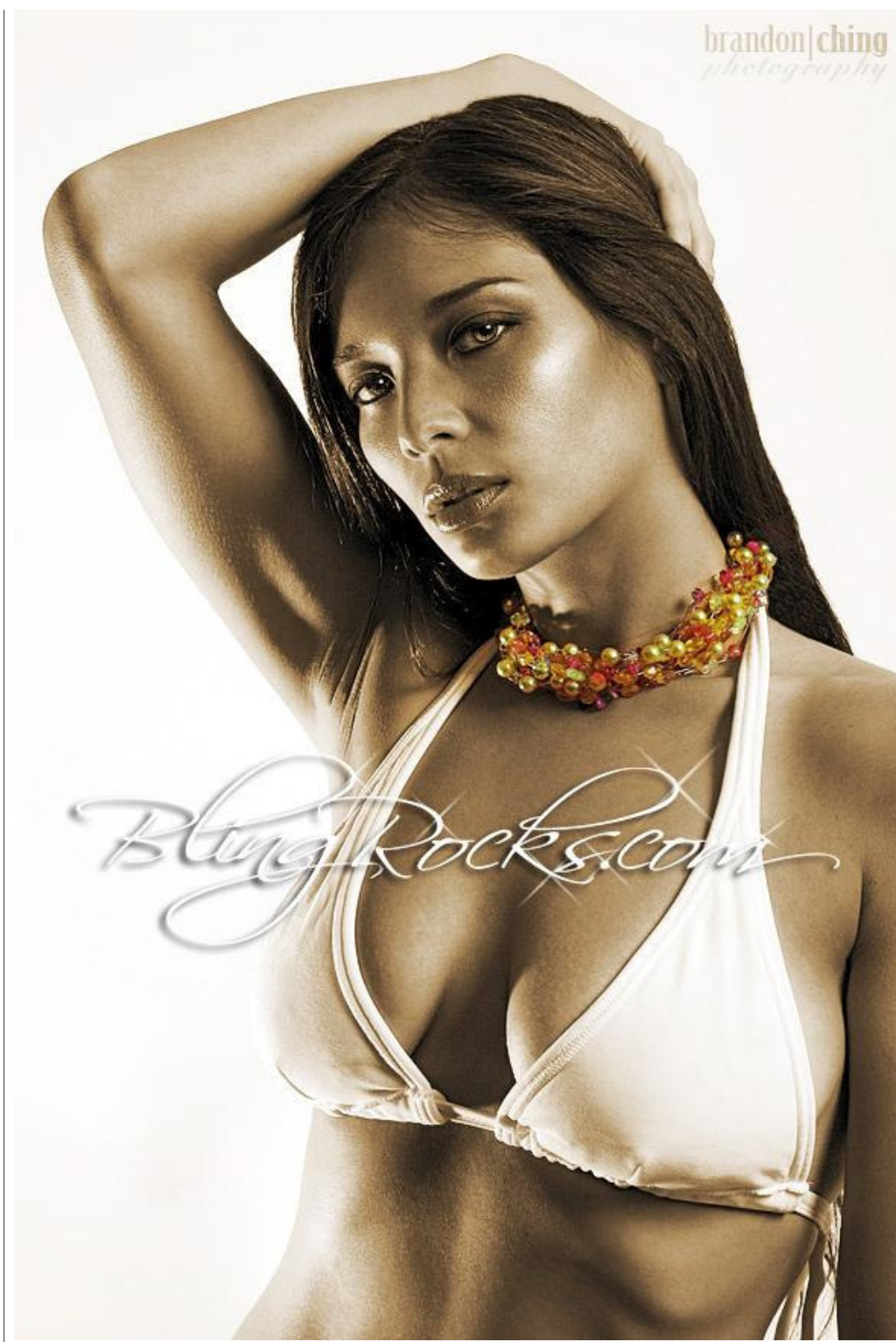
Posts: 3,210

Brandon Ching wrote:

Alright, I'll bite since I provided the link to the lighting setup psd...



VERSION 1.1 - WWW.KEVINKERTZ.COM - ©2006 KEVIN KERTZ
For personal use and to share your setups only. Not for commercial use. Email suggestions to kevin@kevinkertz.com



Brandon? Some have hated on the AB lights. Show them this model and you'll change some opinions about the AB lights.

Dec 08 06 10:01 pm [Quote](#)

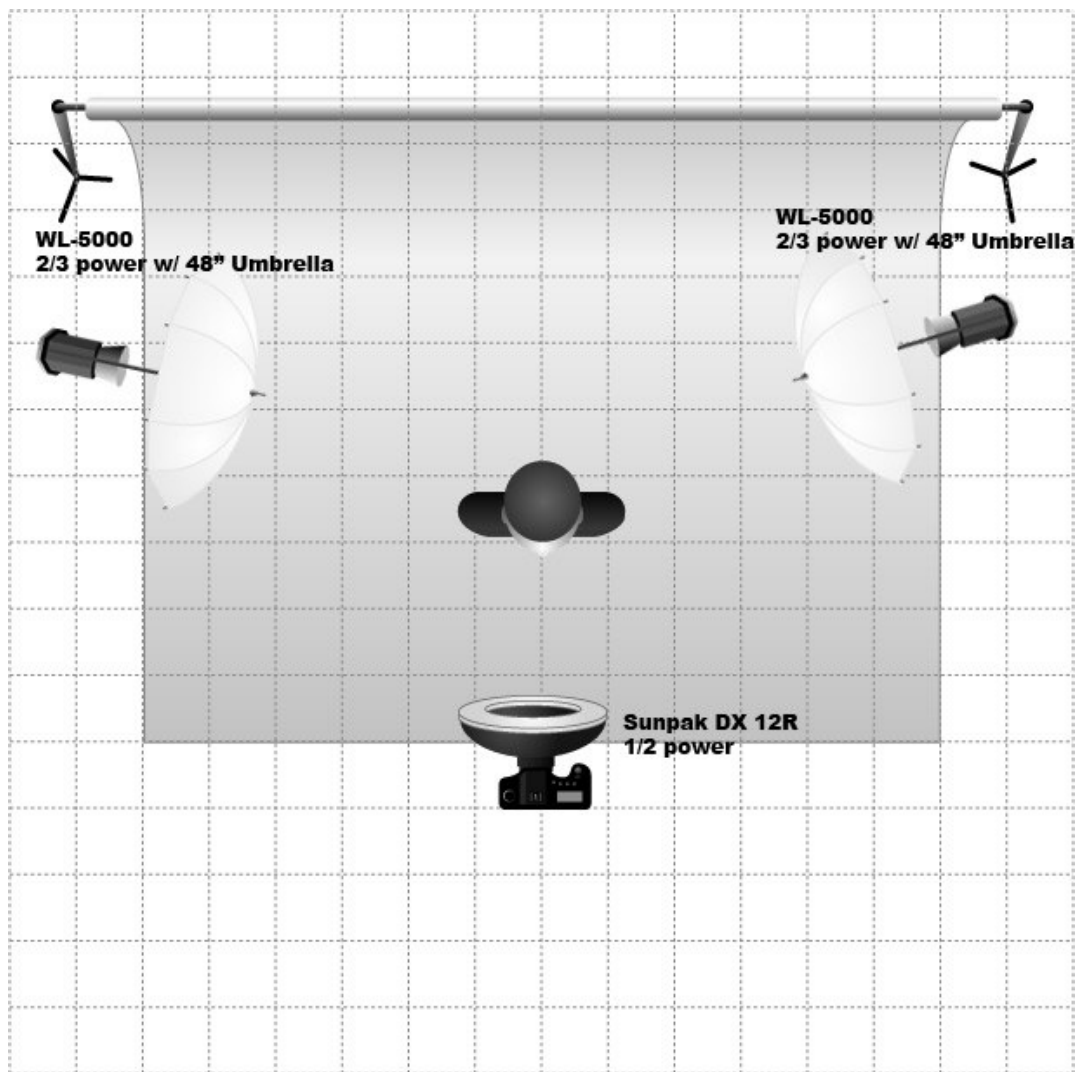
**PHOTOGRAPHER****Ransom J**

Male

Location: Michigan,
Las Vegas, Maryland,
DC, Virginia

Posts: 3,359

hmmm ok I'll play.



VERSION 1.1 - WWW.KEVINKERTZ.COM - ©2006 KEVIN KERTZ
For personal use and to share your setups only. Not for commercial use. Email suggestions to kevin@kevinkertz.com



Dec 08 06 11:14 pm [Quote](#)

1 [2](#) [3](#) [4](#) [5](#) [last](#)

[Reply](#)

©2005-2006 ModelMayhem.com. All Rights Reserved.
[Terms](#) | [Privacy](#)