



[Forums](#) > [Photography Talk](#) > **Lighting Setup Tutorials: basic to advanced**

[first](#) [4](#) [5](#) [6](#) **7** [8](#) [9](#) [10](#) [11](#) [last](#)



**PHOTOGRAPHER**

**[JM Dean](#)**

Male

Location: North  
Carolina

Posts: 4,328

**JAY carreon wrote:**

This shot is perfect! The lighting, the alignment of the elements - perfect!

JAY carreon  
PHOTOGRAPHER

Thanks Jay. I'm trying to get back to simple lighting. I think I've tried to complicate it too much basics.

This one was done with the same 1 halfdome softbox above the model slightly to the left so the





241

PHOTOGRAPHER

**JM Dean**

Male

Location: North

Carolina

Posts: 4,328



Bump

PHOTOGRAPHER

**Rob Gillespie**

Male

Location: London

Posts: 275

**JonasJ wrote:**

Thank you for sharing guys.. here are one of mine. Pretty simple.

This setup:

PHOTOGRAPHER

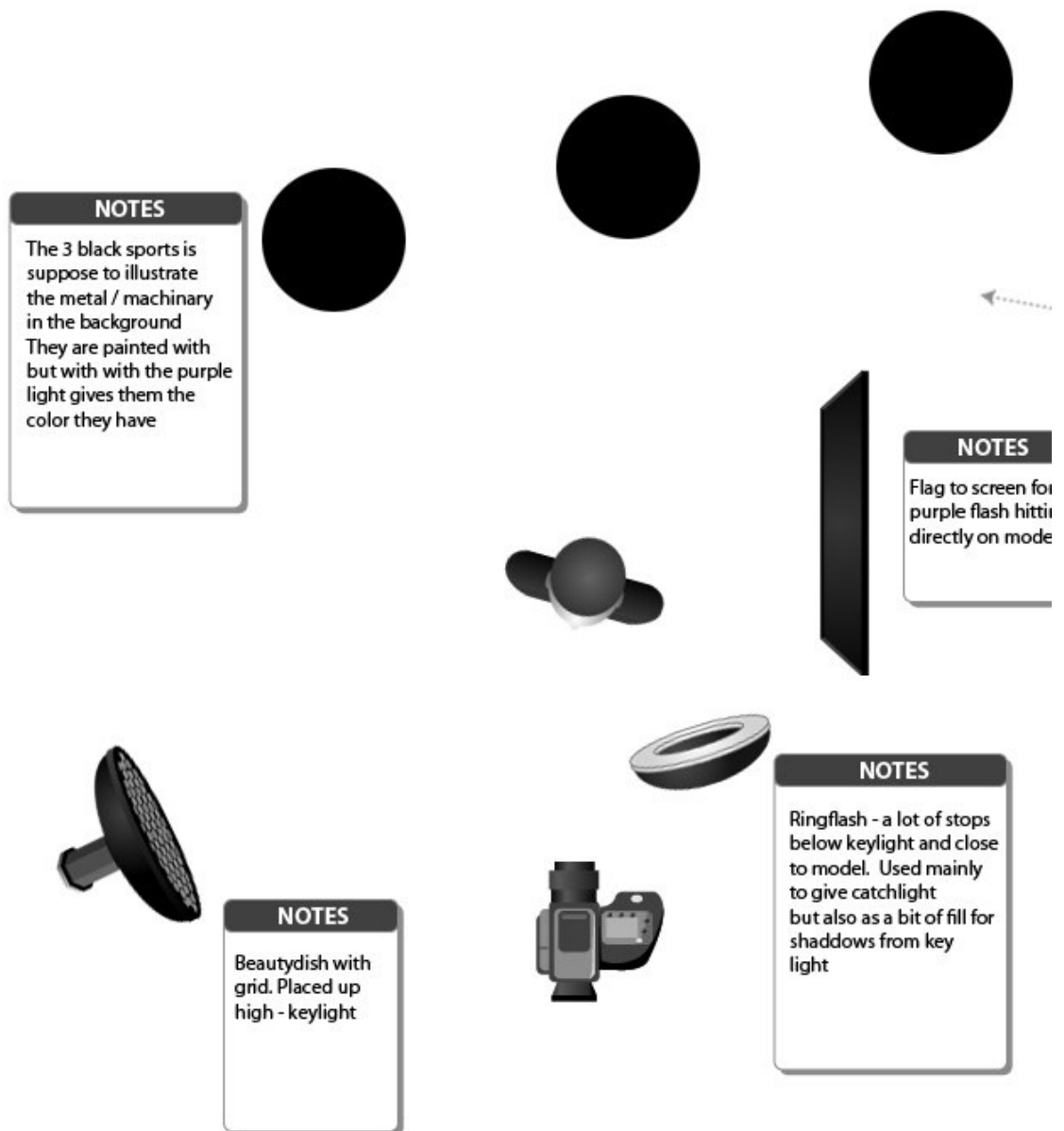
**Matthew Allen  
MEDIA**

Male

Location:

Georgia

Posts: 16



VERSION 1.1 - [WWW.KEVINKERTZ.COM](http://WWW.KEVINKERTZ.COM) - ©2006 KEVIN KERTZ  
For personal use and to share your setups only. Not for commercial use. Email suggestions to [kevin@kevinke](mailto:kevin@kevinke)

Gives you:



Hope it's usefull for anyone.. take care

what kind of lights did you use? and what f-stop were you on? - this is a look i'm working on



**PHOTOGRAPHER**

**[Carsten Tschach](#)**

Male

Location: Germany

Posts: 38

Hi Folks,

where did you all got this fancy little software to do your studio drawings? I checked the Website be a new website. I also tried to mail him, but no response so far....any other sources where to

Cheers, Carsten



PHOTOGRAPHER

[LightLab Studios](#)

Male

Location: Montana

Posts: 396

This direct link is working for me:

<http://www.kevinkertz.com/fm/LightingSetup.psd.zip>

I've updated it in the OP.

Tom



PHOTOGRAPHER

[JonasJ](#)

Male

Location: London

Posts: 143

**MatthewAllen wrote:**

what kind of lights did you use? and what f-stop were you on? - this is a look i'm working on

I always use Profoto storbes. I must say I can't remember the f-stops for that one and the MF c did not get the Exif data onto the back, so I don't have exif, but I'm gussing something like f22



PHOTOGRAPHER

[Jim Ewing](#)

Male

Location: California

Posts: 375

This is without doubt one of the most useful threads on MM (or anywhere!) Can't wait to get a



PHOTOGRAPHER

[LightLab Studios](#)

Male

Location: Montana

Posts: 396

Glad you like it.

Hope to see another setup soon!

**LightLab Studios wrote:**

This direct link is working for me:

**PHOTOGRAPHER****Cardillo**  
**Photography**

Male

Location: Florida

Posts: 540

<http://www.kevinkertz.com/fm/LightingSetup.psd.zip>

I've updated it in the OP.

Tom

This does not seem to work with photoshop elements. Does anyone know where we might get a

**PHOTOGRAPHER****Cardillo**  
**Photography**

Male

Location: Florida

Posts: 540

oops double post

**PHOTOGRAPHER****Matthew Allen**  
**MEDIA**

Male

Location: Georgia

Posts: 16

It doesn't work with Elements cuz elements doesn't have folders.

**PHOTOGRAPHER****photos by don**

Male

Location: Ohio

Posts: 115

**Cardillo Photography wrote:**

This does not seem to work with photoshop elements. Does anyone know where we might get a \

there's only this version.





PHOTOGRAPHER

**JM Dean**

Male

Location: North  
Carolina

Posts: 4,328

**Cardillo Photography wrote:**

This does not seem to work with photoshop elements. Does anyone know where we might get a \

Read thru the entire thread. Someone posted a workaround for Elements and it does work.

**\*\*EDIT\*\***Sorry, the workaround is over on Fred's site.

Quoted from his site:

Here's a workaround for Photoshop Elements users:

Download and install GimpShop. It's an 8Mb download and totally free. Be sure to follow the ins the installation. Once you have it installed open LightingSetup.psd and Save As another file nan all of the available symbols will show up as separate layers which you can turn on and off via th bonus, you now have a very powerful image editing program that is very similar to Photoshop a



PHOTOGRAPHER

**Meehan**

Male

Location: New  
Hampshire

Posts: 2,116

Lovely Front and back lighting.

<http://www.bigstarmodeling.com/LightingSetup5.gif>

And Result!



PHOTOGRAPHER

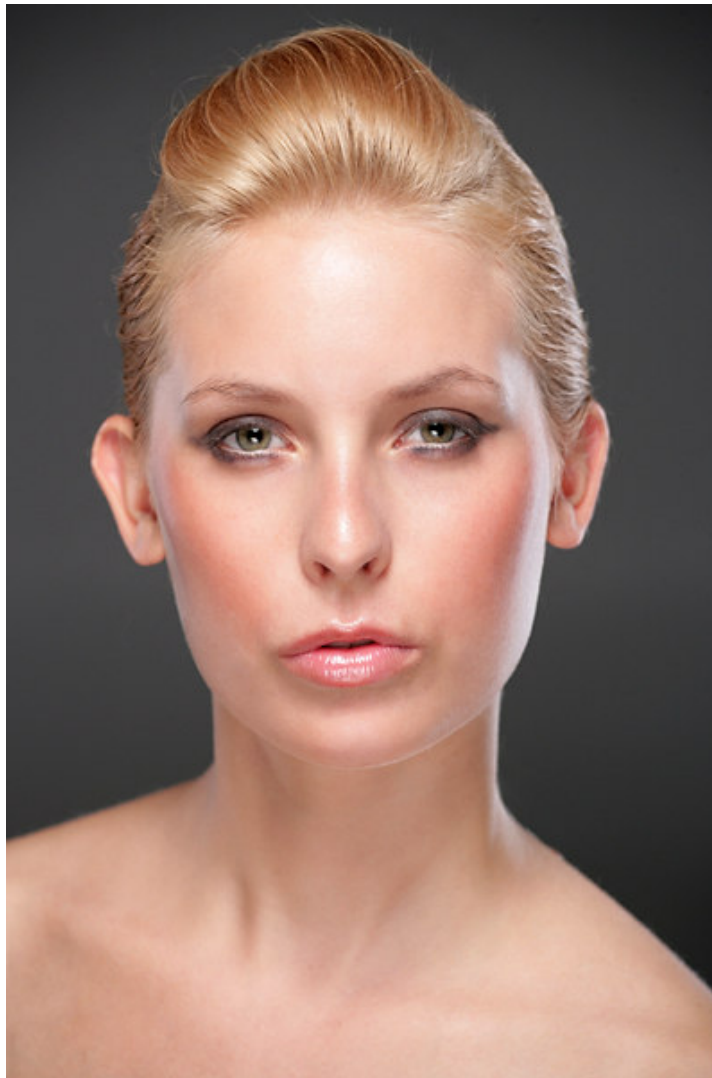
**Elite Group**

PORTRAIT/HEAD SHOT

Male  
Location: Western  
Australia  
Posts: 183







bump

PHOTOGRAPHER

[Rob Gillespie](#)

Male

Location: London

Posts: 275



PHOTOGRAPHER

[waynesglamgirls](#)

Male

Location: Ontario

Posts: 202

**LightLab Studios wrote:**

LINK FOR MAKING LIGHTING DIAGRAMMS

(provided by Brandon Ching):

Try this: (courtesy of kevin kertz)

new link: <http://www.kevinkertz.com/fm/LightingSetup.psd.zip>

old link: <http://www.fredmiranda.com/forum/topic/446987>

To use...

- 1) Download file LightingSetup.psd.zip (size 200k)
- 2) Unarchive the Zip file
- 3) Open the Photoshop file: LightingSetup.psd. (size 500k)
- 4) The file defaults with a Background, Subject and 35mm Camera.
- 5) To view (add) an item, open the appropriate folder and click on the item (as seen below). You can toggle an item visible or to hide it.
- 6) Move and rotate into place.
- 7) Save a copy of your finished setup. Don't save over original file (for future use).

Updates:

Sept. 13, 2006 - Original file

Sept. 25, 2006 - Version (1.1) Added Strip Softboxes and Hairlights

Restrictions:

- For personal use and to share your setups only!
- NO commercial use
- Please leave the copyright on ALL setups...Thanks!

How do you use this? I am a PC user and can't figure it out? Do you use this in Photoshop?



PHOTOGRAPHER

[Brandon Ching](#)

Male

Location: Hawaii

Posts: 1,098

Yes.

1. Download the Lighting Diagram.
2. Open the PSD in Photoshop.



PHOTOGRAPHER

[Mac Swift](#)

Male

**David Poata wrote:**

PORTRAIT/HEAD SHOT

Location: Alberta  
Posts: 299





What is providing the rim light on the right side of the image?



PHOTOGRAPHER

[AnthoNYC](#)

Male

Location: New York

Posts: 162

**Mac Swift wrote:**

What is providing the rim light on the right side of the image?

Good question...



PHOTOGRAPHER

[Mickle Design Werks](#)

Male

Location: Maryland

Posts: 1,110

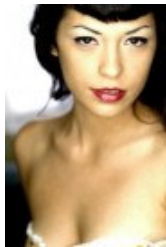
**Mac Swift wrote:**

What is providing the rim light on the right side of the image?

The beauty dish.

Larger beauty dish: if conditions and transportation warrants. This larger dish gives more dimension to the final image. It takes up a lot of space when I'm working on location, but the final look, with the rim light, is worth it.

<http://www.imaginginfo.com/article/arti...mp?id=1389>



PHOTOGRAPHER

[M435TRO](#)

Male

Location: California

Posts: 42

Bump Shakalaka Bump....!!



PHOTOGRAPHER

[Elite Group](#)

Male

Location: Western

Australia

Posts: 183

**Mac Swift wrote:**

What is providing the rim light on the right side of the image?

Rim L = a soft box set behind her at about 2 stops less than the Key L 😊



**David Poata wrote:**

Rim L = a soft box set behind her at about 2 stops less than the Key L 😊

I figured there was another light involved :-). You're sure it was powered lower than the key? The rim light looks good.

## PHOTOGRAPHER

[Mac Swift](#)

Male

Location: Alberta

Posts: 299



## PHOTOGRAPHER

[Kai-Huei Yau](#)

Male

Location: Oregon

Posts: 70

Bump.

This should stay on the first page forever.



## PHOTOGRAPHER

[Elite Group](#)

Male

Location: Western

Australia

Posts: 183

**David Poata wrote:**

Rim L = a soft box set behind her at about 2 stops less than the Key L 😊

Sorry, what was I thinking when I posted that???? I meant 1 stop over the Key L but was havin rim light down guessing bout 2/3 of a stop, sorry again for posting incorrect info, sheesh 😞



## PHOTOGRAPHER

[Jairo Cruz](#)

Male

Location:

Massachusetts

Posts: 205

Hello everyone. I made a diagram with that little PSD file, saved as a JPG. Now how do I get it i figure it out.

Thanks

J



**PHOTOGRAPHER****Scott**

Male

Location: Florida

Posts: 578

It might be interesting to see people use ONLY 1 light and as many modifiers for different finally

**PHOTOGRAPHER****Jairo Cruz**

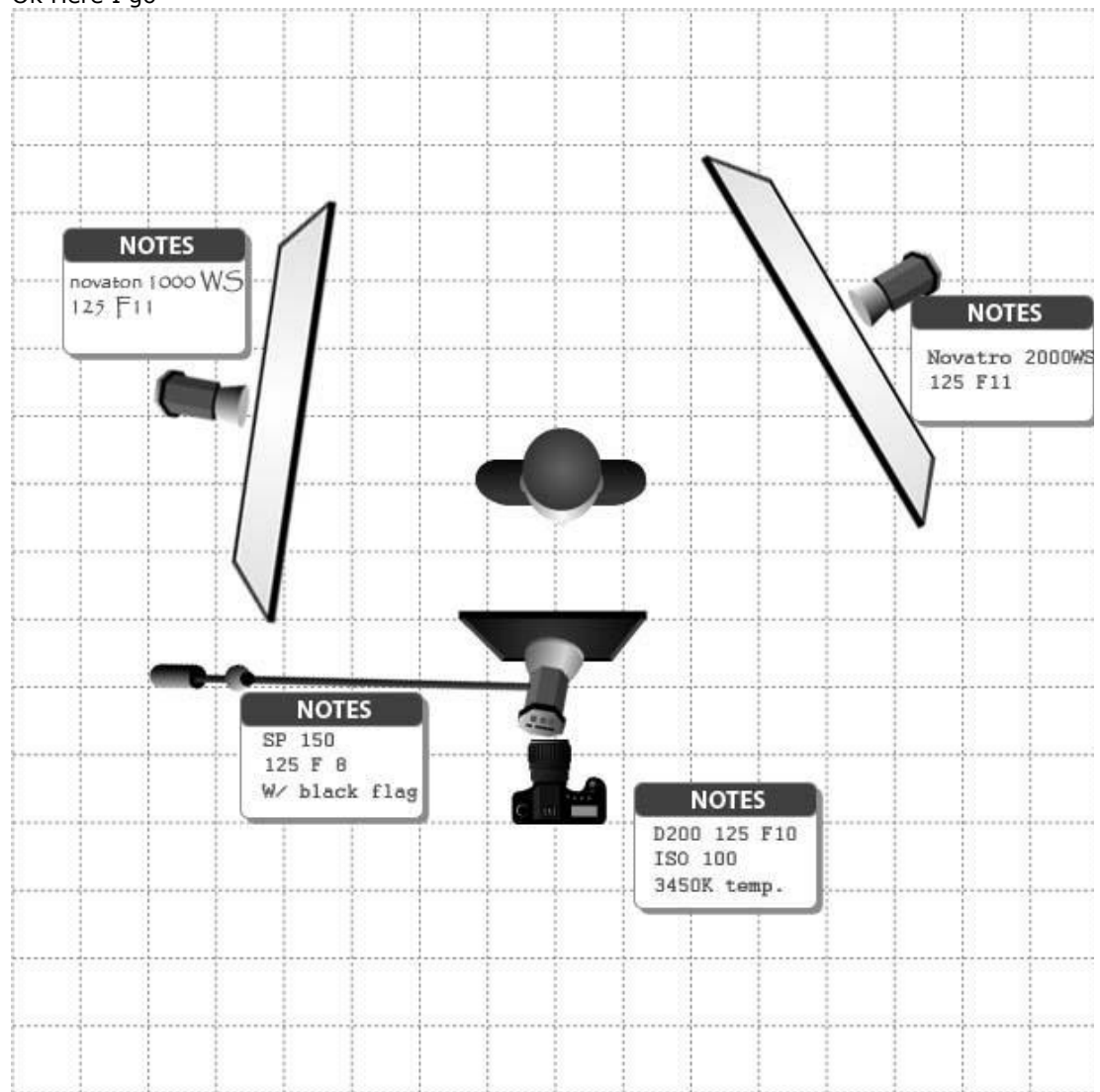
Male

Location:

Massachusetts

Posts: 205

Ok Here I go



VERSION 1.1 - [WWW.KEVINKERTZ.COM](http://WWW.KEVINKERTZ.COM) - ©2006 KEVIN KERTZ  
For personal use and to share your setups only. Not for commercial use. Email suggestions to [kevin@kevinkertz.com](mailto:kevin@kevinkertz.com)



Gets you the top and middle one. I'll post later for the third one.



PHOTOGRAPHER

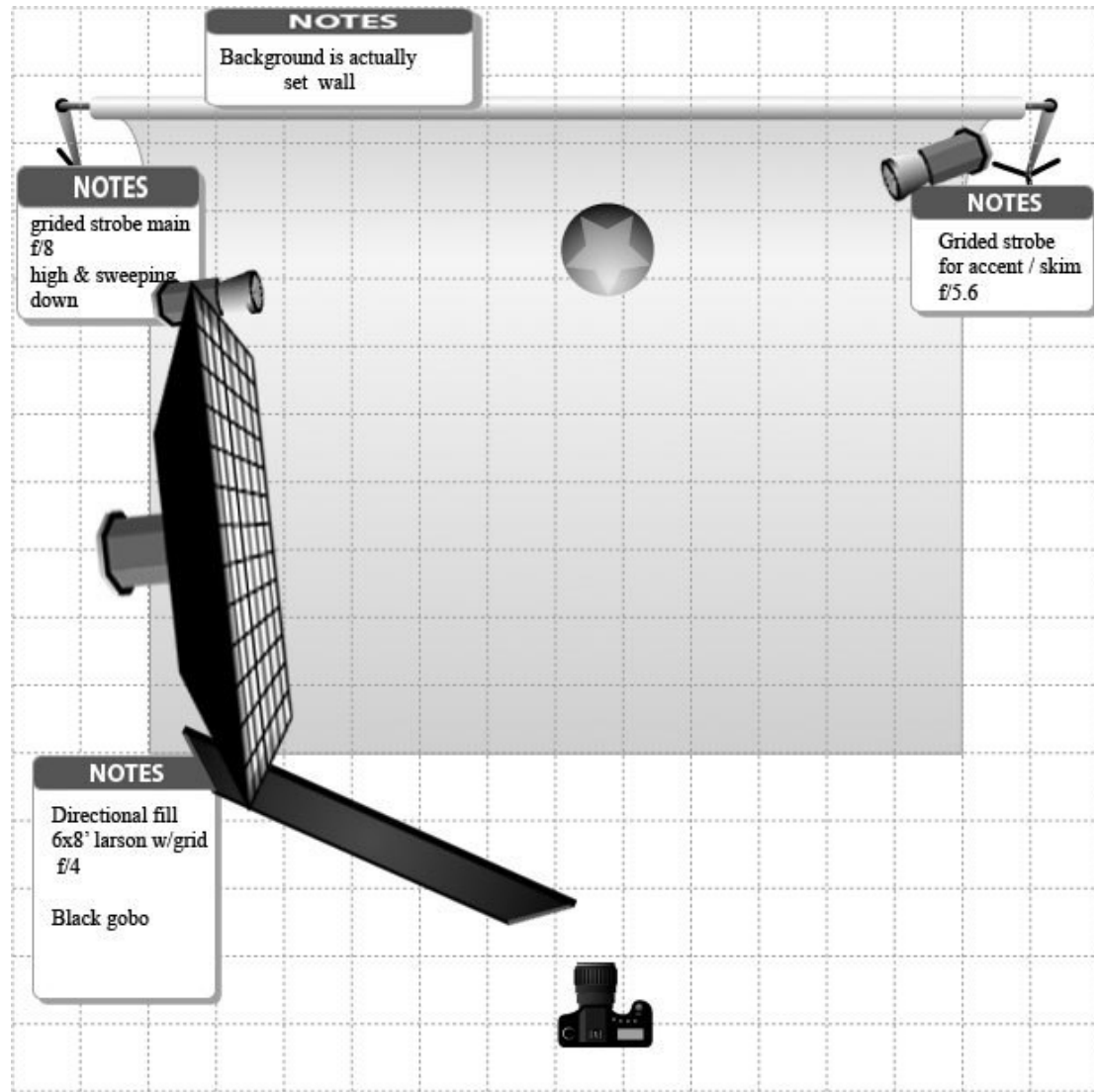
**Studio JP**

Male

Location: Texas

Posts: 85

A very nifty tool, a a great thread. My first contribution...



VERSION 1.1 - WWW.KEVINKERTZ.COM - ©2006 KEVIN KERTZ  
For personal use and to share your setups only. Not for commercial use. Email suggestions to kevin@kevinkertz.com

And this was the finished result (minor PS work).

<http://i153.photobucket.com/albums/s204 ... 1169762540>

Edit: I forgot that I could not post an 18+ image, sorry...



PHOTOGRAPHER

**LightLab Studios**

**Jairo Cruz wrote:**

Hello everyone. I made a diagram with that little PSD file, saved as a JPG. Now how do I get it in couldn't figure it out.

Thanks

J

Male  
Location: Montana  
Posts: 396

You need to put the jpeg of your diagram online (perhaps Photobucket), then you can properly [img][img].

You can always hit "quote" on a similar post to open it up and see how it was done if you forget



PHOTOGRAPHER

[LightLab Studios](#)

Male  
Location: Montana  
Posts: 396

Studio JP,

Beautiful shot and great lighting. Thanks for sharing!

Tom



PHOTOGRAPHER

[Jairo Cruz](#)

Male  
Location:  
Massachusetts  
Posts: 205

**LightLab Studios wrote:**

You need to put the jpeg of your diagram online (perhaps Photobucket), then you can properly lin  
code: [img][img].

You can always hit "quote" on a similar post to open it up and see how it was done if you forget.

Thank you, Light Lab.

I have it on my website but for some reason it will not let me link to it. I think it's the security s  
I'll keep trying.  
J



PHOTOGRAPHER

[Photography by  
Amber](#)

Female  
Location: British  
Columbia  
Posts: 151

Mac Swift, would love to know how you lit your avtar image!





PHOTOGRAPHER

[Elite Group](#)

Male

Location: Western  
Australia

Posts: 183



PHOTOGRAPHER

[The Rock  
Photography](#)

Male

Location:

Posts: 102

david,

love the lighting. and thanks for the behind the scenes image too. love seeing them.



PHOTOGRAPHER

[Lucisang](#)

Female

Location: Quebec

Posts: 110

Wow, this information is awesome for someone like me who is trying to learn.

but seriously, of all this thread, the very first example just blows my mind! I find myself going to become my favorite example of a great picture with great colors and lighting.

anyways, thanks for this thread.

sorry i have nothing to contribute, im a noob with noob equipment 😊



PHOTOGRAPHER

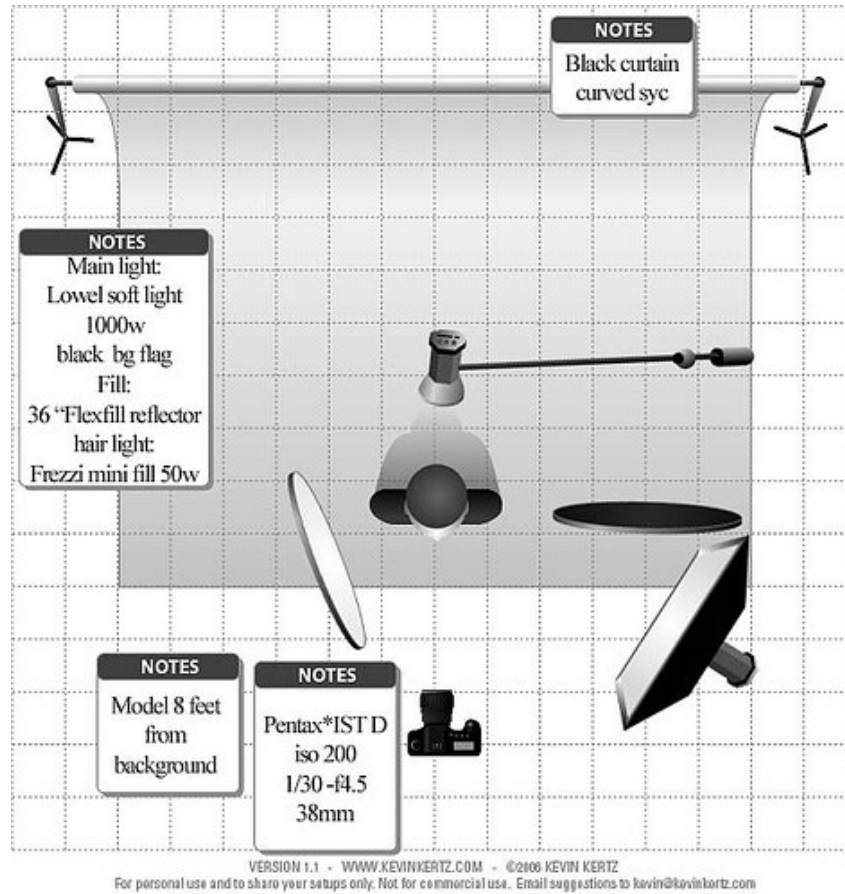
[Vidmandave](#)

Male

Location: Maine

Posts: 306

A K.I.S.S. light set up keep it simple stupid LOL







PHOTOGRAPHER

[Mac Swift](#)

Male

Location: Alberta

Posts: 299

**Photography by Amber wrote:**

Mac Swift, would love to know how you lit your avatar image!

The redhead on my old one? Simple. A 36"x48" softbox to camera right literally just out of frame strip box placed below her at about her mid thigh level and pointing straight up. Kind of a neat same way but I used a white reflector camera left and just out of frame.

[first](#) [4](#) [5](#) [6](#) **7** [8](#) [9](#) [10](#) [11](#) [last](#)

[main](#) | [browse](#) | [forums](#) | [shout box](#) | [info](#) | [my stuff](#) | [logout](#)

©2006-2007 ModelMayhem.com. All Rights Reserved.

[Terms](#) | [Privacy](#) | [Internet Rank](#)