


[main](#) [browse](#) [casting](#) [forums](#) [shout box](#) [info](#) [my stuff](#) [logout](#)

MM#

[Forums](#) > [Photography Talk](#) > **Lighting Setup Tutorials: basic to advanced**
[first](#) [8](#) [9](#) [10](#) **11** [12](#) [13](#) [14](#) [15](#) [last](#)


PHOTOGRAPHER

[Five Rivers](#)

Male

Location: Ontario

Posts: 65

Very helpful! BUMP

May 2



PHOTOGRAPHER

[LightLab Studios](#)

Male

Location: Montana

Posts: 648

**fStopstudios wrote:**

yes, agreed-- one of the best threads I've ever seen anywhere. I vote for stickie. Mucho kudos to the OP.

Thanks for your kind words about my work and this thread. I can't put too much time into it, but I hope it continues.

As far as the studio you mention, that's not mine. It's in Seattle and was a former downtown auto dealership now vacant, space.

Cheers,  
Tom

May 2



PHOTOGRAPHER

[dncphotos](#)

Female

Location: Texas

Posts: 1,068

this was on page 5...thats a no no had to bump it back up 😊

Jun 0



PHOTOGRAPHER

[Synthetic Shadows](#)

Female

Location: Pennsylvania

Posts: 1,484

i love you guys... seriously, the amount of time and dedication everyone has put into this thread to help other people learn really inspiring! 🙌

Jun 0



PHOTOGRAPHER

**Sean Armenta wrote:**

WOW how cool is this little diagramming thing! sweet!

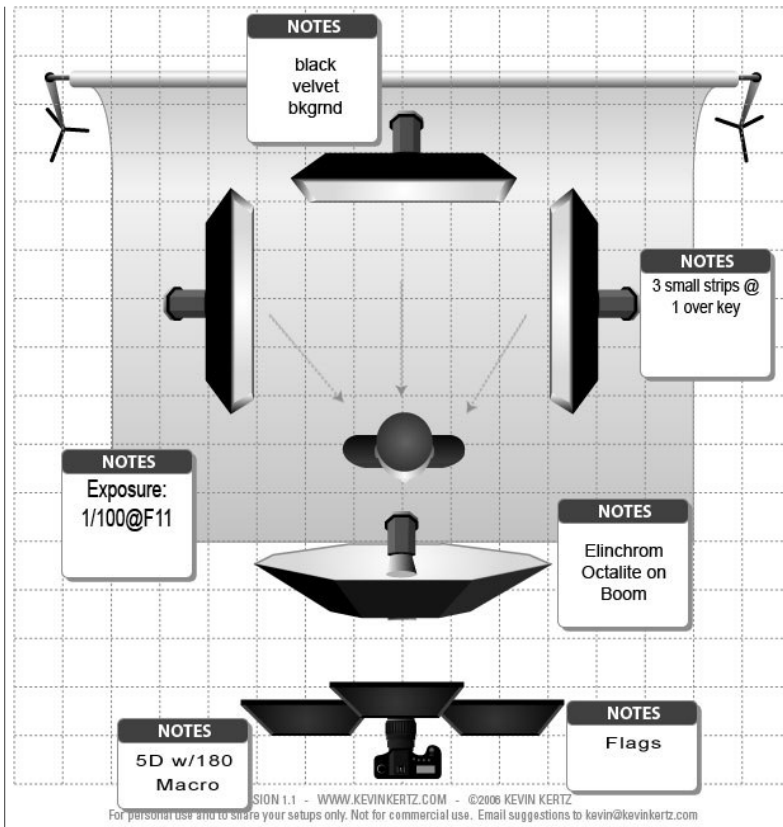
this:

**AndrewThomasDesigns**

Male

Location: Minnesota

Posts: 4,044



gets you this:



and if you want to see the video of it, go here:

<http://www.youtube.com/watch?v=oftbXkMw0NA>

I'm going to blame you when I end up getting a few more lights and soft boxes next month!

Jun 0



PHOTOGRAPHER

[Benito Martinez](#)

Male

Location: Texas

Posts: 20

any word on when pages 6-11 will be in a reader format? this thread is too valuable to not be saved on to my hard drive.

Jun 0



PHOTOGRAPHER

[Kristine Kreations](#)

Female

Location: California

Posts: 896

Aww, when I saw there was a new post, I thought there was going to be new material...

Jun 0



PHOTOGRAPHER

[Philip Gunderson](#)

Male

Location: Missouri

Posts: 23

Thanks so much for some great ideas to work on. Can't wait to start using them

Jun 0



PHOTOGRAPHER

[otto van solkema](#)

Male

Location:

Posts: 17

Now this is something we (read I with a capital I) can use. Informative info instead of messages like this :-)

Tnx to the starter of the topic!

Otto

Jun 0



PHOTOGRAPHER

[Patchouli Nvx](#)

Female

Location: California

Posts: 9,342

Jun 0



PHOTOGRAPHER

**Brandon Ching**

Male

Location: Hawaii

Posts: 1,174

**Benito Martinez wrote:**

any word on when pages 6-11 will be in a reader format? this thread is too valuable to not be saved on to my hard drive...

Thy will be done.... pages 6-10 can be downloaded here:

[http://www.brandonching.com/pdf/lightin ... pp6-10.zip](http://www.brandonching.com/pdf/lightin...pp6-10.zip) (10.3MB)

Jun 08 07 01



PHOTOGRAPHER

**The Photo Collective**

Male

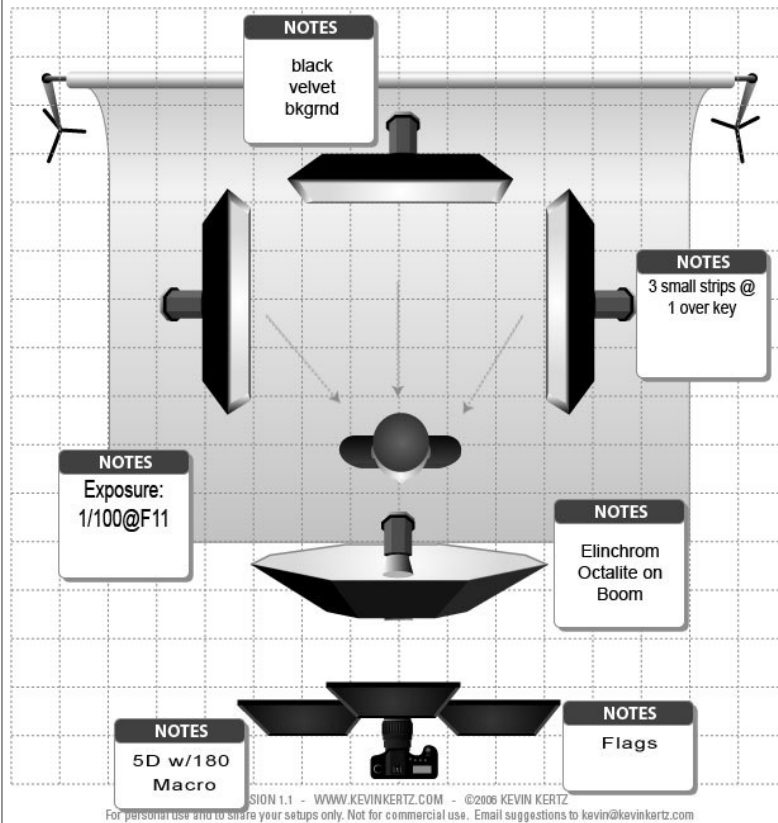
Location: Arizona

Posts: 236

**Sean Armenta wrote:**

WOW how cool is this little diagramming thing! sweet!

this:



gets you this:



and if you want to see the video of it, go here:

<http://www.youtube.com/watch?v=oftbXkMw0NA>

why did you remove the video?! i'd LOVE to see it!

Jun 0



PHOTOGRAPHER

[paulcobophotography](#)

Male

Location: Florida

Posts: 99

I am very new to Studio Lighting and I loved this thread. If anyone wants some tips on my shot I would love to help. He did inside:

I use an Octagon Soft Box from the left below and another harder main light from the right. Very simple.



Jun 0



PHOTOGRAPHER

[rp\\_photo](#)

Male

Location: Texas

Posts: 11,167

Currently, I am experimenting with reflector-bounced off-camera flash:

[http://www.richardsfault.com/rp\\_photo/2007/06.01-OysterCreek07/flash\\_setup.jpg](http://www.richardsfault.com/rp_photo/2007/06.01-OysterCreek07/flash_setup.jpg)



Jun 0



PHOTOGRAPHER

[paulcobophotography](#)

Male

Location: Florida

Posts: 99

Here a better example of my work:



Jun 0



PHOTOGRAPHER

[paulcobophotography](#)

Male

Location: Florida

Posts: 99

Sun from the left exposed to just a rim light and Octagon Soft box from the right.



Jun 0



PHOTOGRAPHER

[rochinphotography](#)

Male

Location: California

Very helpful. Thanks to everyone who contributes.



Posts: 79

Jun 0



PHOTOGRAPHER

[Photo-Illustrations](#)

Male

Location: Pennsylvania

Posts: 285

I hate to show what I do unless you are a student but since everyone has been cool about it. Here is one.

<http://www.photo-illustrations.net/pixyprint.jpg>

It isn't great but I liked it.

Jun 0



PHOTOGRAPHER

[LightLab Studios](#)

Male

Location: Montana

Posts: 648

Good to see some life returning to this thread.

I have updated the OP to include the link to the PDF for pages 6-10 of this thread. Thanks again to Brandon for doing this!

The purpose of this thread is to teach, learn, share information about lighting techniques. I request that you do not post o descriptions here.

Please create a diagram, if possible. If not, at a minimum, please provide detailed information on your setup:

- lighting used, description of modifiers
- the metering or ratios of each individual light
- distance and position relative to subject
- details of the final exposure

I do hope this thread will eventually get stickied. I'd also like to be able to do some maintenance from time to time and cle "bump" posts to keep it nice and clean. Hopefully, this function will eventually be allowed by the Tyler and the mods.

Thanks to everyone participating in this thread!

Jun 0



PHOTOGRAPHER

[LightLab Studios](#)

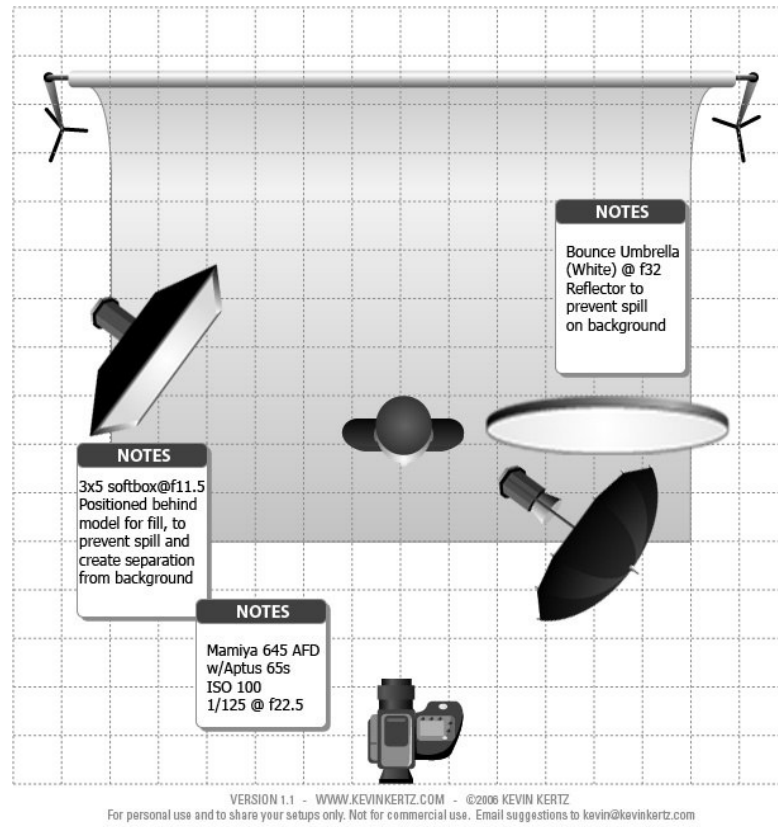
Male

Location: Montana

Posts: 648

Here's a setup from a recent shoot with Mariah. The photo is an unretouched proof with some RAW adjustments.





Jun 0



PHOTOGRAPHER

[Blacklyricss](#)

Male

Location: New Jersey/New York  
Posts: 54**paulcobophotography wrote:**

Here a better example of my work:



what was this shot with and @

Jun 0



PHOTOGRAPHER

[Joe Messenger](#)

Male

Location: Maryland

Posts: 145

Ok this may be a dumb question but i am going to ask,  
When you post on theses neat little diagrams. like f.11 and such for the lighth how do you figure that out with out having ;  
something i can do in my camera (canon 30d) and or something i can do with my lights to figure out the math? I have 3 a  
thanks all i am learning a ot from these post so keep them coming please!

Jun 1



**PHOTOGRAPHER****Processed Pixels**

Male

Location: Wisconsin

Posts: 150

Well, that can be answered in a variety of ways because there are a variety of ways to reach the ultimate goal... a great photo. You work with a light meter, some rely on the camera's internal meter (in essence still a light meter) and yet others simply go for a guess. If you start out your shoot with a complete concept in mind all of the above becomes easier to determine. You can spend a great deal of time and depth you would like to achieve and set your lights around that desired F-Stop to produce your desired results. All of the above applies to artificial lighting. With natural lighting some of it still applies, but in most cases as you do not control the sun you use your best judgment to achieve the desired results.

In the past and I could be wrong, so there is no need for anyone to blast me on this, but a lot of photographers worked with natural light to set their lights... now a day with most of us aiming for an extreme departure from cookie cutter photography ratios really apply. Once you have your desired shot then it's just a matter of looking at the EXIF data from the image for insertion into the post.

I hope this answers your question, but remember, this is just my opinion. Everyone has their own process that works best for them.

Jun 1

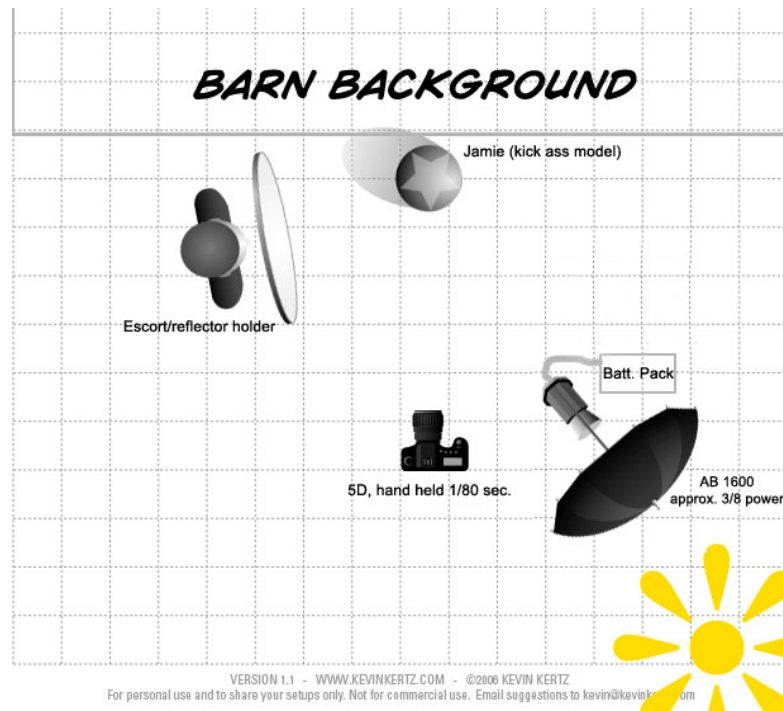
**PHOTOGRAPHER****Timothy Hughes**

Male

Location: Wisconsin

Posts: 862





I don't know the exact settings on my remote triggered, 640 w/s light.

Jun 1



PHOTOGRAPHER

[Clicker10](#)

Female

Location: New York

Posts: 2

this is by far my favorite thread ever!!

keep it comin' 😊

Jun 1



PHOTOGRAPHER

[R2A Photography](#)

Male

Location: Illinois

Posts: 23

This thread was great! My thanks to everyone for sharing. I can't wait to try some these setups.

Jun 1



PHOTOGRAPHER

[Neil Shelby Long](#)

Male

Location:

Northamptonshire

Posts: 21

Oh no you don't!  
Bump

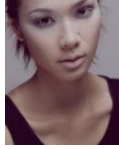
Jun 1



PHOTOGRAPHER  
[TimeShift Studios](#)  
 Male  
 Location: Florida  
 Posts: 219

Keep this alive!

Jun 2



PHOTOGRAPHER  
[Justin Huang](#)  
 Male  
 Location: California  
 Posts: 1,297

this thread is too good to die!

Jun 2



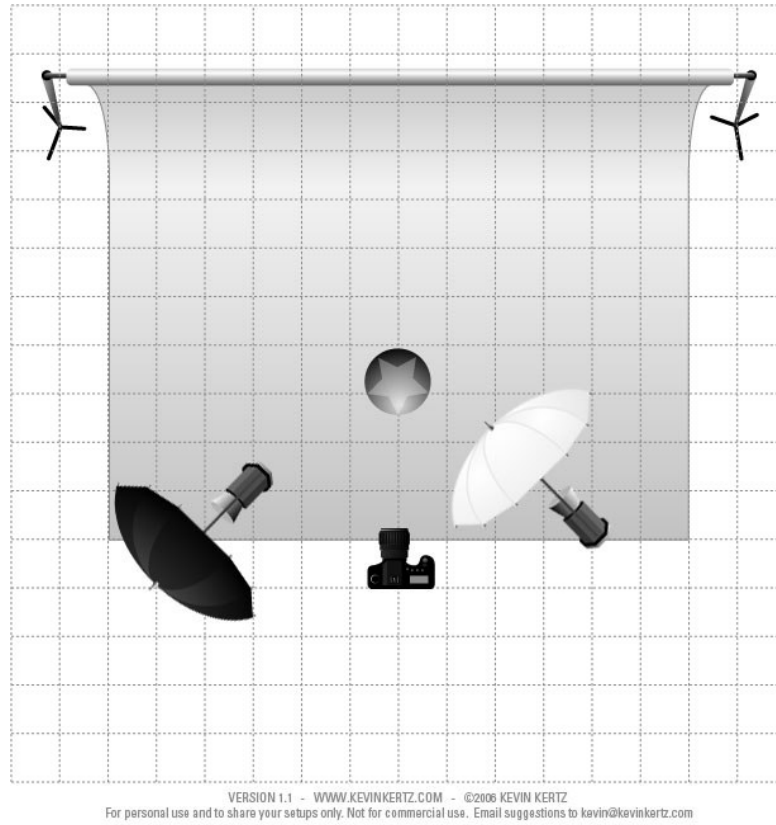
PHOTOGRAPHER  
[Stephen McLeod](#)  
 Male  
 Location: Glasgow  
 Posts: 4



Ok..

No meter readings as err... I don't have one =X

Fairly (very) simple setup that I use for most of my stuff.



This whole thread has made me jealous and determined to get more creative lighting.

I have a spare smaller light I use to light the hair/backlight when appropriate.

Jun 2



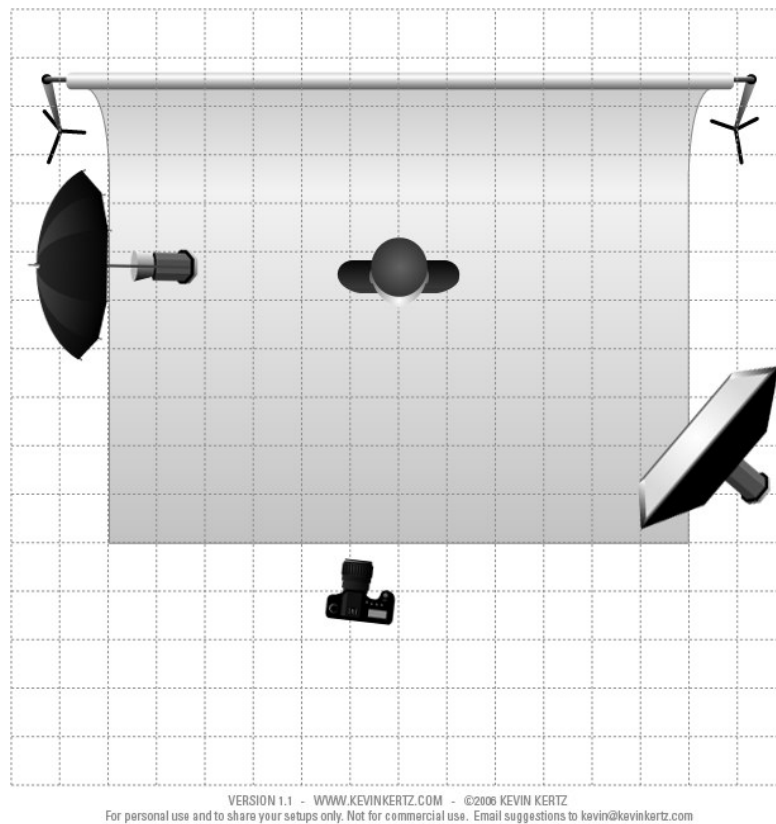
PHOTOGRAPHER

[Absynth Studios](#)

Male

Location: Pennsylvania

Posts: 34

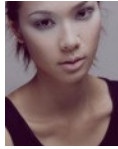






Nothing too fancy.

Jun 2



PHOTOGRAPHER

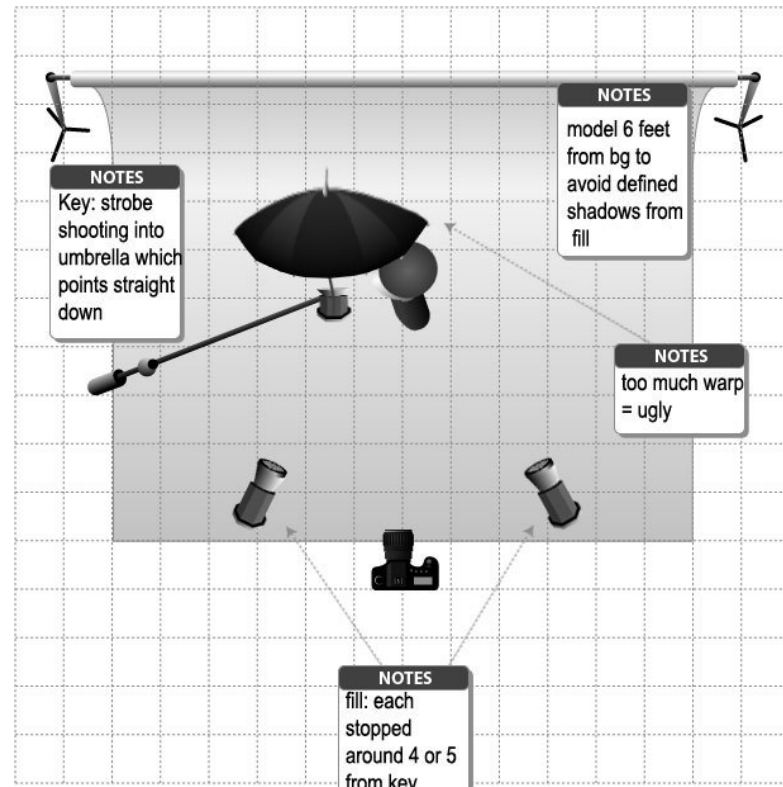
[Justin Huang](#)

Male

Location: California

Posts: 1,297

here's one of my setups. it's pretty noobish, possibly an example of what you should NOT do... but this thread needs to st



VERSION 1.1 - [WWW.KVINKERTZ.COM](http://WWW.KVINKERTZ.COM) - ©2006 KEVIN KERTZ  
For personal use and to share your setups only. Not for commercial use. Email suggestions to [kavin@kevinkertz.com](mailto:kavin@kevinkertz.com)



Jun 2



PHOTOGRAPHER

[FajardoWorks](#)

Male

Location:

Posts: 24

\*bump don't let this thread die... lol

Jun 2



PHOTOGRAPHER

[Tommy Chambers](#)

Male

Location: Georgia

Posts: 134

any idea where to get that snazzy tool for saving lighting setups?

this thread is awesome and should be put in a PDF!

Jun 3



PHOTOGRAPHER  
[RGK Photography](#)  
 Male  
 Location: Connecticut  
 Posts: 1,093

**Tommy Chambers wrote:**  
 any idea where to get that snazzy tool for saving lighting setups?  
 this thread is awesome and should be put in a PDF!

Look on page one for answers to both

Jun 3



PHOTOGRAPHER  
[Anthony Cole](#)  
 Male  
 Location:  
 Florida.....Atlanta,Ga.New  
 Jersey-North Carolina  
 Posts: 171

Bump

Jul 0



PHOTOGRAPHER  
[Love and Wonder](#)  
 Male  
 Location: Silver  
 Spring, MD  
 Posts: 234

Cant compare to some of the people here, but:



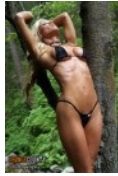
Very Simple Lighting.

WLX1600 in large softbox, 8 feet away from model, 5 feet up angled at 45 down connected to vagabond pack.

Sun at 10:00am, model in shade from forest.

I am having fits dealing with this diagraming stuff, I will see if i can add a proper diagram later.

Jul 0



bump for a great thread

PHOTOGRAPHER

[OrangeCountyPhotography](#)

Male

Location: California

Posts: 172

Jul 0



**RGK Photography wrote:**

Look on page one for answers to both

LOL

PHOTOGRAPHER

[Brandon Ching](#)

Male

Location: Hawaii

Posts: 1,174

Jul 02 07 0:



Bump

PHOTOGRAPHER

[Bilgehan Argun](#)

Male

Location:

Posts: 2

Jul 0

[first](#) [8](#) [9](#) [10](#) **[11](#)** [12](#) [13](#) [14](#) [15](#) [last](#)

[main](#) | [browse](#) | [forums](#) | [shout box](#) | [info](#) | [my stuff](#) | [logout](#)

©2006-2007 ModelMayhem.com. All Rights Reserved.

[Terms](#) | [Privacy](#) | [Internet Rank](#)