




[main](#)
[browse](#)
[casting](#)
[forums](#)
[shout box](#)
[info](#)
[my stuff](#)
[logout](#)
MM# XXXXXXXXXX

[Forums](#) > [Photography Talk](#) > **Lighting Setup Tutorials: basic to advanced**

[first](#) [10](#) [11](#) [12](#) **[13](#)** [14](#) [15](#) [16](#) [17](#) [last](#)



PHOTOGRAPHER
[LightLab Studios](#)
 Male
 Location: Montana
 Posts: 648

Mark,
 I know I already asked you in a PM, but any chance we can get you to discuss one of your location setups? Thanks.
 Tom



PHOTOGRAPHER
[LightLab Studios](#)
 Male
 Location: Montana
 Posts: 648

(I posted these pics in another thread and then realized they should be shared here as well...)

Behind-the-scenes of the Paper Chase shoot. Pics by my first asst Drew. Second assts Betsy and Jeremy. Model Tayln.

The setup. There was lots of throwing and picking up paper that day for my assistants. Getting the "Whirlwind" shot.



Demonstrating the pose to the model. There's a reason I'm behind the camera.



Getting the "Matrix" shot.



Getting the "Grab" shot.



Tom, stop looking at the LCD.



Here are some of the final pics.

The whirlwind shot.



The matrix shot.



The grab shot.



PHOTOGRAPHER

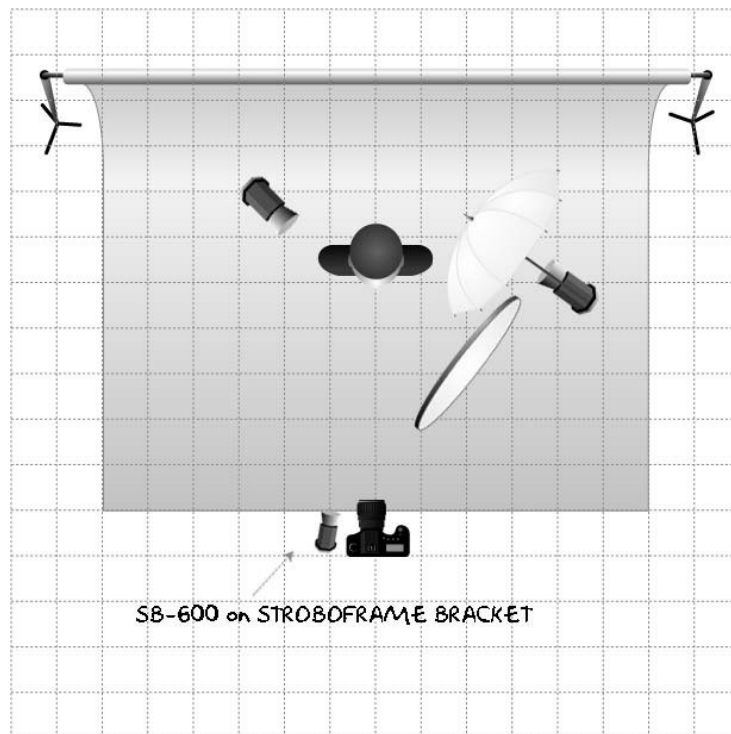
[Sam Comer](#)
[Photography](#)

Male

Location: TN

Posts: 551

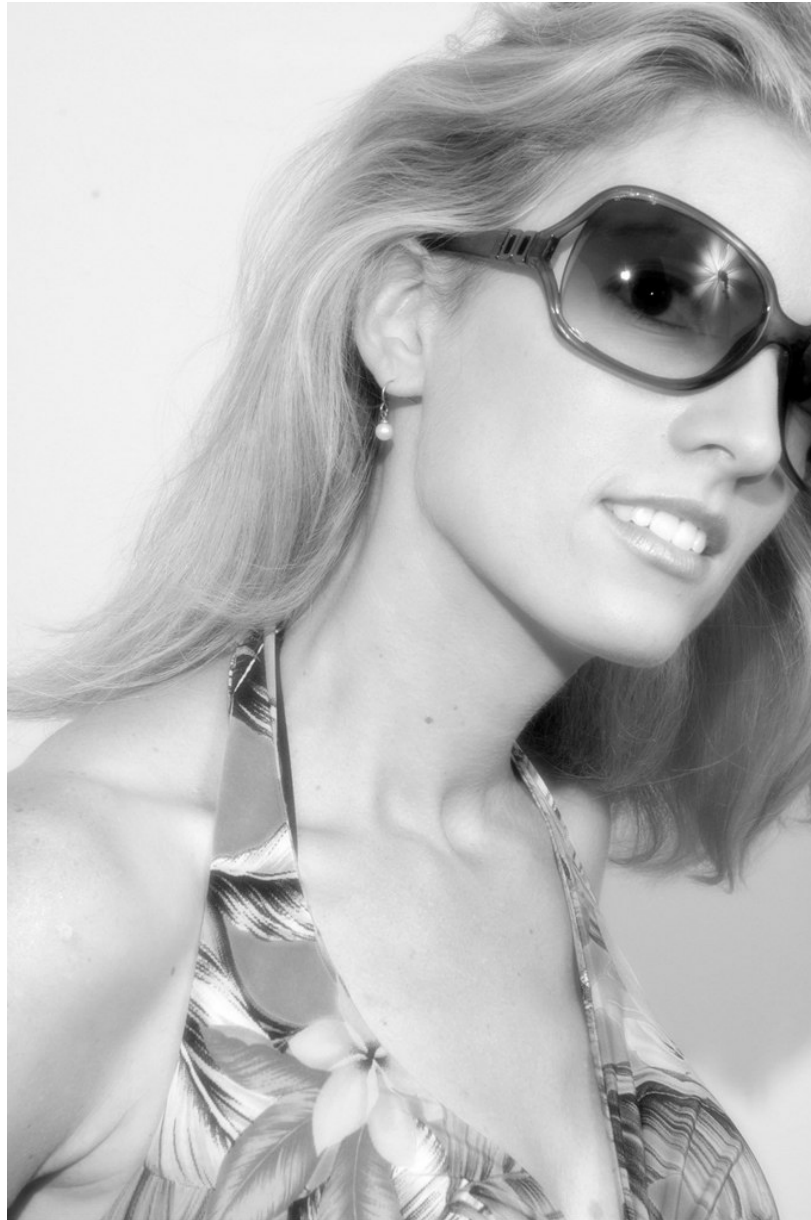
So, I get my model over the other night and I start to set up my lights only to discover I'd left the power cord to my power pack. I improvised with my SB-600 setting off a couple of AC Slaves and 42in Westcott reflector.



SB-600 on STROBOFRAME BRACKET

VERSION 1.1 - WWW.KEVINKERTZ.COM - ©2006 KEVIN KERTZ

For personal use and to share your setups only. Not for commercial use. Email suggestions to kevin@kevinkertz.com



PHOTOGRAPHER

[Trent Chau](#)

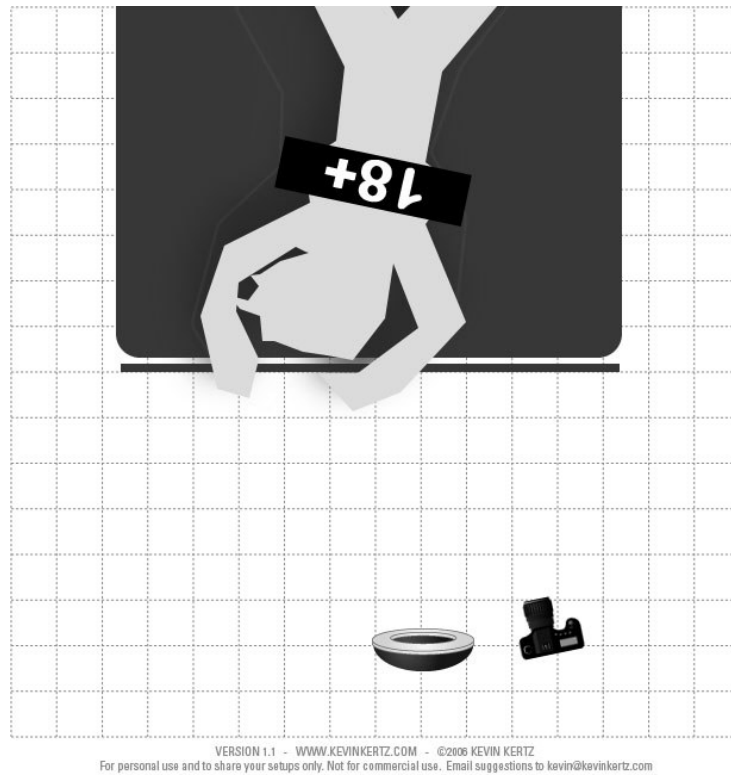
Male

Location: Georgia

Posts: 537

Here's to hoping some of you will see the comedic value in this 😊

Modified for my taste



<http://www.modelmayhem.com/pic.php?pid=3572114>



PHOTOGRAPHER

[Marco Aureliani](#)

Male

Location: Italy

Posts: 353

Amazing topic, thanks! 😊



PHOTOGRAPHER

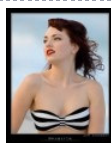
[Trent Chau](#)

Male

Location: Georgia

Posts: 537

bump!



PHOTOGRAPHER

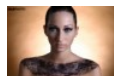
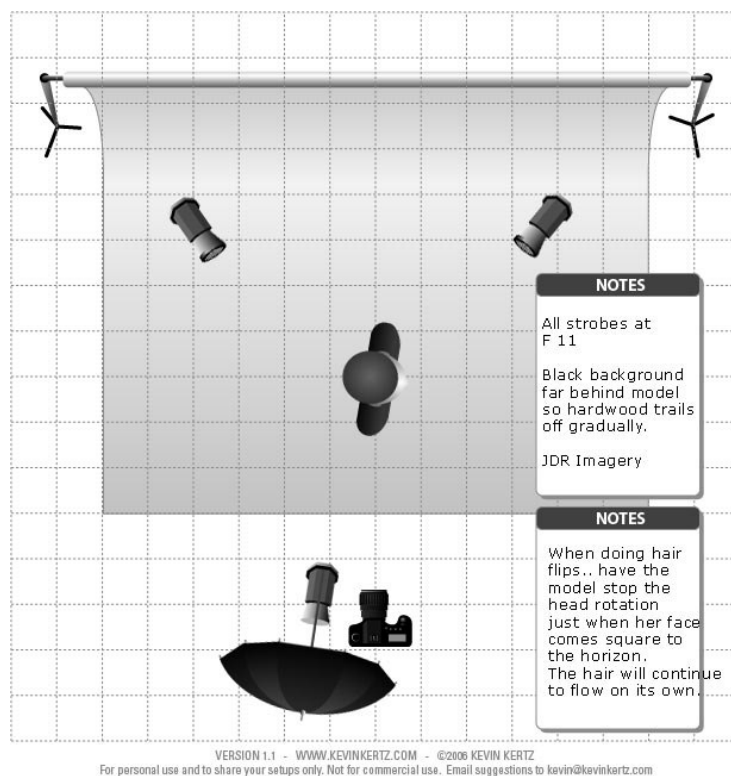
[JDR Imagery](#)

Male

Location: New Jersey

Posts: 51

Ok I will give it a go.....



PHOTOGRAPHER
BLOPHOTO
Male
Location: Illinois
Posts: 188

ward wrote:

Sleep is over-rated...you can't shoot when you're sleeping. 😊

...LOL, yessir...I operate on about 4-5 hours...go hard or go home...LOL!



PHOTOGRAPHER
BLOPHOTO
Male
Location: Illinois
Posts: 188

LightLab Studios wrote:

(I posted these pics in another thread and then realized they should be shared here as well...)

Behind-the-scenes of the Paper Chase shoot. Pics by my first asst Drew. Second assts Betsy and Jeremy. Model Tayln.

The setup. There was lots of throwing and picking up paper that day for my assistants. Getting the "Whirlwind" shot.



Demonstrating the pose to the model. There's a reason I'm behind the camera.



Getting the "Matrix" shot.



Getting the "Grab" shot.



Tom, stop looking at the LCD.



Here are some of the final pics.

The whirlwind shot.



The matrix shot.



The grab shot.



PHOTOGRAPHER
BLOPHOTO
Male
Location: Illinois
Posts: 188

BLOPHOTO wrote:

....very cool...impressive!



PHOTOGRAPHER
TimeShift Studios
Male
Location: Florida
Posts: 219

Bump.



PHOTOGRAPHER

[Chanel Rene](#)

Female

Location: California

Posts: 925

.....BUMP:.....

I am a novice when it comes to lighting... I absolutely adore this thread!

I know this is probably asking too much, but I figure it doesn't hurt to ask... lol

Can someone post a set up using the equipment I have?

I don't have much, and I'm feeling really limited, but I *KNOW* one of y'all can probably do some amazing stuff with the bare r

I've got 3 strobes with black/foil umbrellas, a Lowell tungsten light with a white umbrella. I've also got black, white and blue se

This was taken with a strobe to the models right, a strobe hitting the paper and the tungsten light on a boom above the models



Model: Victoria Castillo MUA/Hair: Makeup by Mimi *chanel rene photography*

LETS KEEP THIS THREAD ALIVE!



PHOTOGRAPHER

[Chanel Rene](#)

Female

Location: California

Posts: 925

:::BUUUUUMPI!:::



Chanel Rene wrote:

.....BUMP:.....

I am a novice when it comes to lighting... I absolutely adore this thread!

I know this is probably asking too much, but I figure it doesn't hurt to ask... lol

Can someone post a set up using the equipment I have?

I don't have much, and I'm feeling really limited, but I *KNOW* one of y'all can probably do some amazing stuff with the bare mir

PHOTOGRAPHER

[Steve Daubs](#)
[Photography](#)

Male

Location: Wisconsin

Posts: 87

I've got 3 strobes with black/foil umbrellas, a Lowell tungsten light with a white umbrella. I've also got black, white and blue sear

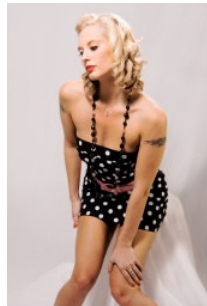
This was taken with a strobe to the models right, a strobe hitting the paper and the tungsten light on a boom above the models he



Model: Victoria Castillo MUA/Hair: Makeup by Mimi *chanel rene photography*

LETS KEEP THIS THREAD ALIVE!

I just wanted to say that there are plenty of great photos on this site taken with 3 strobes or less. So you don't need to apologize. I used a handkerchief over the reflector, bounce a light off a piece of white foamcore. Fire a light through a sheet. This image was shot with a hairlight (+1 stop) had a small grid to focus the light (but you could use a homemade snoot just as easily) and then a fill light



I hope this helps a little.

srd



PHOTOGRAPHER

[Chanel Rene](#)

Female

Location: California

Posts: 925

Thanks for the reply!

I'm definitely going to start experimenting more with the equipment I have!

:~::~BUMPS::~~::~



PHOTOGRAPHER

[mrbeagle](#)

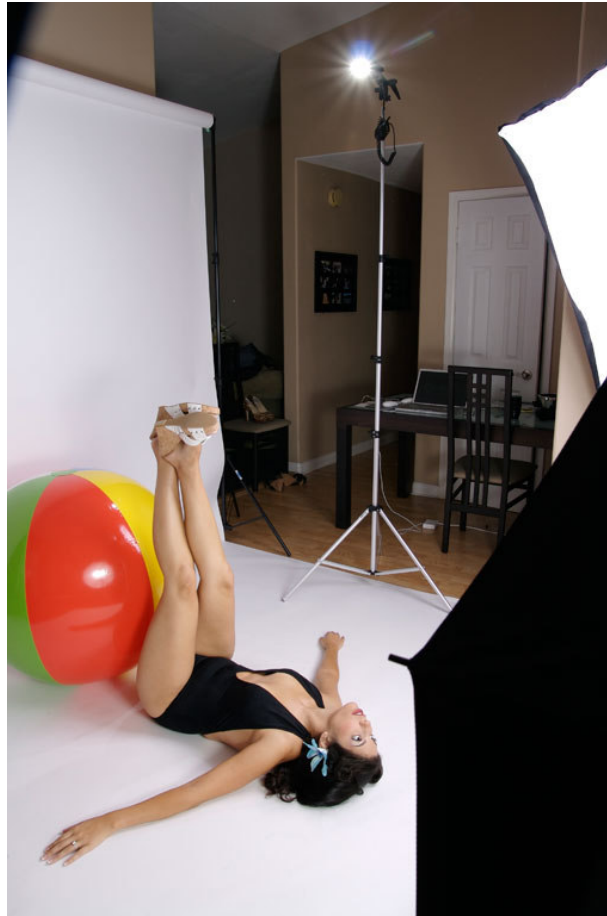
Male

Location: California

Posts: 329

I'll throw one in as well. This is from my pinup shoot the other week





PHOTOGRAPHER

[K -- O](#)

Male

Location: Nevada

Posts: 1,123

I love this thread ... deserves a bump de bump.



PHOTOGRAPHER

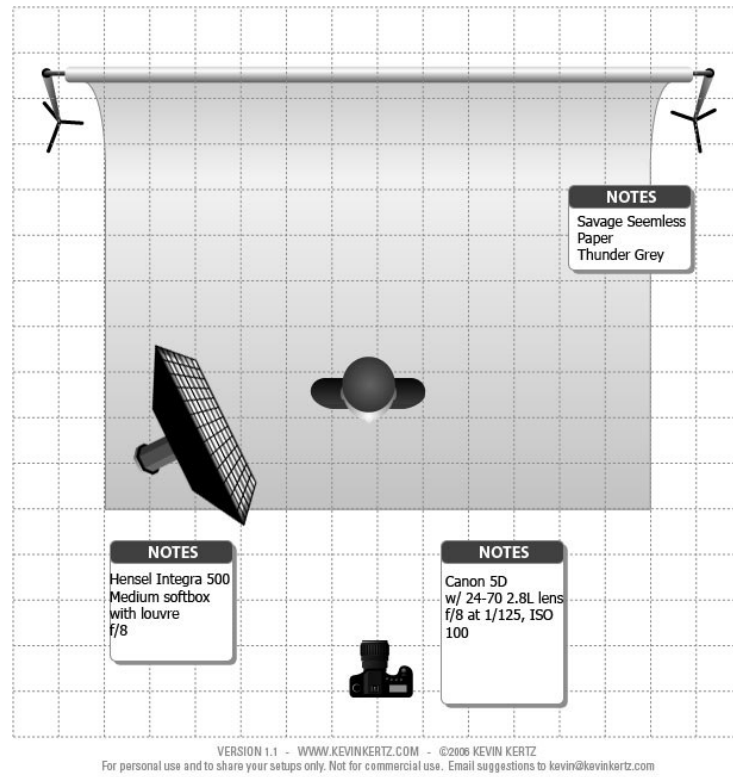
[Mickie Design Werks](#)

Male

Location: Maryland

Posts: 1,754

Simplicity...one light shot



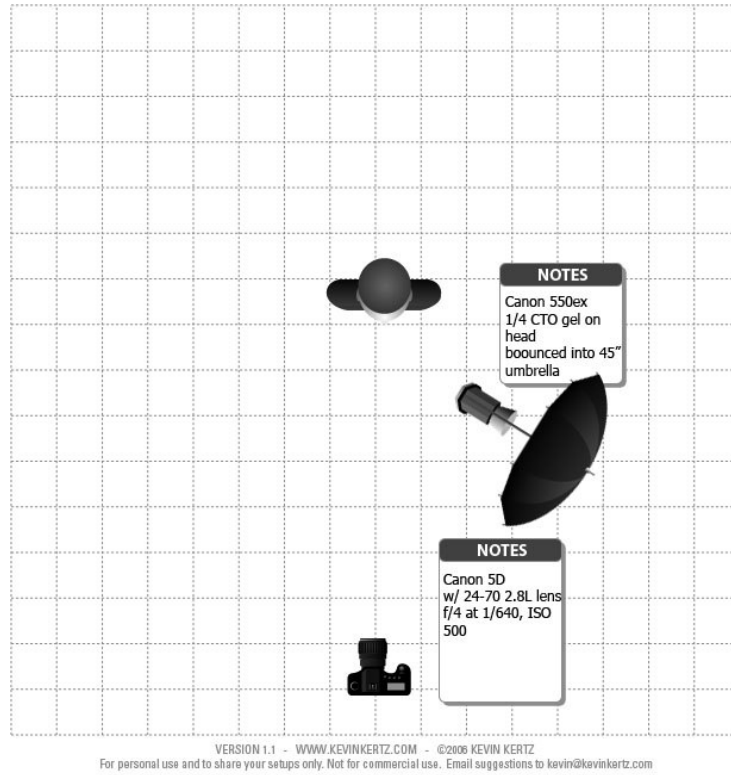
Another one light set-up

Mickle Design Werks

Male

Location: Maryland

Posts: 1,754



1. Exposed for sky
2. shot 1-2 stop under exposure value for sky
3. 550ex were set to high speed sync
4. ETTL adjusted for flash intensity





PHOTOGRAPHER

[Mark M Gong](#)

Male

Location: District of

Columbia

Posts: 246

LightLab Studios wrote:

Mark,
I know I already asked you in a PM, but any chance we can get you to discuss one of your location setups? Thanks.
Tom

Hi Tom, which on location shoot do you want me to show? Sorry for the late reply.

Mark



PHOTOGRAPHER

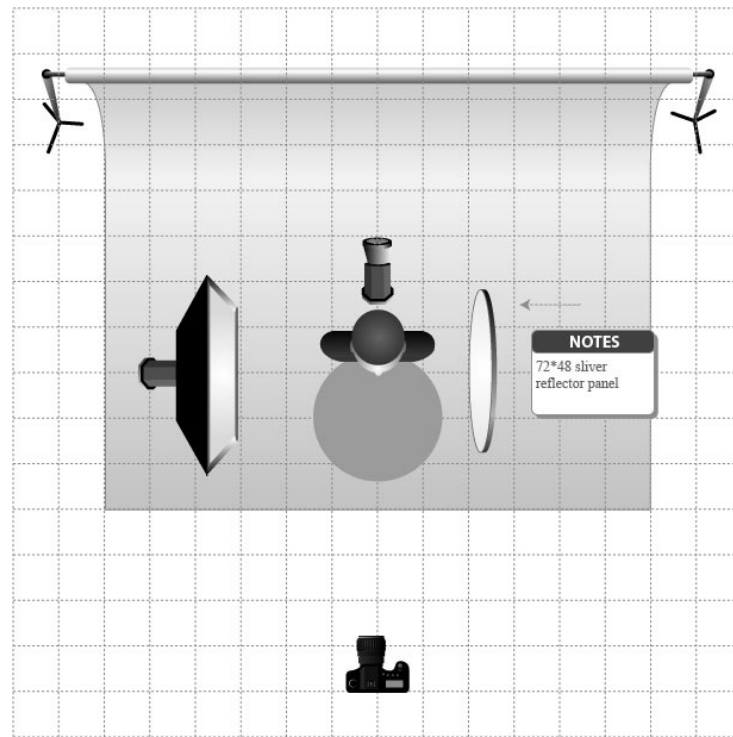
[Jason Myers](#)[Photography](#)

Male

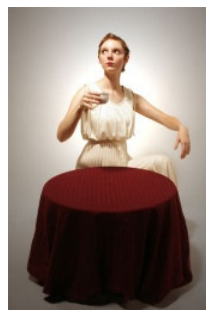
Location: Colorado

Posts: 44

Well this is to cool not to post something. Here is my Tea House Doll lighting setup.



VERSION 1.1 - WWW.KEVINKERTZ.COM - ©2008 KEVIN KERTZ
For personal use and to share your setups only. Not for commercial use. Email suggestions to kevin@kevinkertz.com





PHOTOGRAPHER

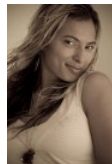
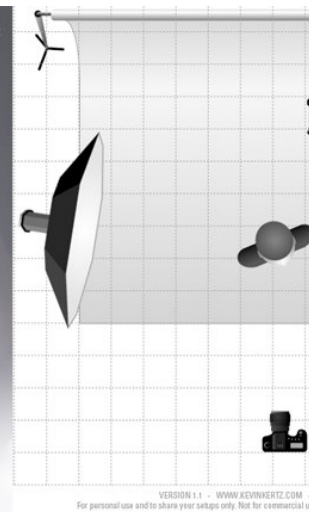
[Florian Duenker](#)

Male

Location: Hamburg /

Germany

Posts: 20



PHOTOGRAPHER

[Tekoaphoto](#)

Male

Location:

Posts: 144

This is an amazing thread that has so many great setups. Thanks to all for sharing. Now I have to go and practice.

*excuse me...excuse me...Watch where you're....BUMP



PHOTOGRAPHER

[Florian](#)

[Duenker](#)

Male

Location:

Hamburg /

Germany

Posts: 20

next one



<http://www.florian-duenker.com>



PHOTOGRAPHER

[LightLab Studios](#)

Male

Location: Montana

Posts: 648

Hi Florian,

Thanks for posting some setups. It would be very helpful for everyone if you would discuss your lighting ratios and final exposure.

Tom



PHOTOGRAPHER

[Visual Lee Designs](#)

Female

Location: Victoria

Posts: 346

Hi all, i did this shot with one light, a photographic style tungsten i borrowed from a friend, somewhere between flash and tungsten light at 60 degree angle and walked around the other side and took the shot. Yes it is a mannequin, but it will work the same on complicating things sometimes



You can get a better idea if you click it and see a little larger



PHOTOGRAPHER

[Tuonela Images](#)

Male

Location: Alberta

Posts: 32

wow, ok about 30 mins a great reading here in this thread, all the advice people. keep up the good work.

learning from some of you is amazing, let's keep this thread going

-R



PHOTOGRAPHER

[chexmix](#)

Male

Location:

mobiusfx.com

Posts: 99

Mickle Design Werks wrote:

Another one light set-up



Mickle Dam, thats some beautiful work with just a 550ex flash. I'm glad you posted it, shows you don't need a whole bunch of then enough!



PHOTOGRAPHER

[LightLab Studios](#)

Male

Location: Montana

Posts: 648

Behind-the-scenes lighting setup...



If I remember correctly, large umbrella was f11 and lights with zoom reflectors were f16. Later, I put a fourth light in the backs



PHOTOGRAPHER

[LightLab Studios](#)

Male

Location: Montana

Posts: 648

Behind-the-scenes...



Umbrella reflector at about f8 and zoom reflectors at about f11.



PHOTOGRAPHER
[LightLab Studios](#)
Male
Location: Montana
Posts: 648

Behind-the-scenes...



Umbrella and zoom reflector on main dock were set to about f16. Beauty dish with grid on far dock (foreground in pic) was set to would help to separate models from water/background which it did by providing minimal rim lighting (not noticeable).

On the second image when I was behind the diving board, the beauty dish provided the nice specular highlights on the water gir





PHOTOGRAPHER
[LightLab Studios](#)
 Male
 Location: Montana
 Posts: 648



Kickers are approximately one stop over fill light.





PHOTOGRAPHER

[LightLab Studios](#)

Male

Location: Montana

Posts: 648



Ambient was f16. Kickers set to approximately f22. Fill at approximately f11. Sun from behind and to the left of the models.

I ran out of time and set this one up quickly and was not completely satisfied with the results. I didn't have time to proof the light and just used the sun. I also would have upped the fill by moving the umbrella reflector closer to the subjects.

I do like the overall illustrated effect I got with the lighting and hope to get another chance to do this one right in the future. We and they were high-strung; not calm ranch horses). Getting the horses and models in the right place at the same time was a cr



PHOTOGRAPHER

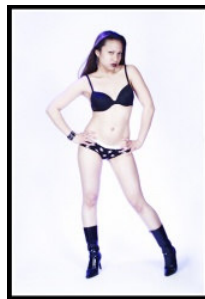
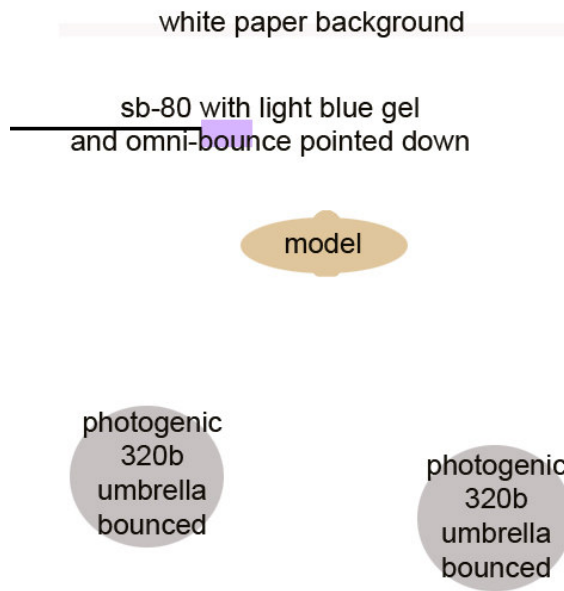
[Jamie Baker](#)

Male

Location: California

Posts: 277

Nice diagrams. here is an easy set-up that I liked.



<http://img8.modelmayhem.com/070614/00/4670c32e7a875.jpg>



PHOTOGRAPHER
[Nomethod](#)
Male
Location: Sweden
Posts: 36

bump



PHOTOGRAPHER
[Blacklyrics](#)
Male
Location: New
Jersey/New York
Posts: 54

high ceilings dammit high ceiling. love it wish I had the space

mrbeagle wrote:

I'll throw one in as well. This is from my pinup shoot the other week





PHOTOGRAPHER

[Wyssio](#)

Male

Location: Georgia

Posts: 23

LOVE THIS THREAD!



PHOTOGRAPHER

[LW2PHOTO](#)

Male

Location: NRW

Posts: 1

A calendar shooting from the 1st September

<http://wolejko-wolejszo.com/files/light1.jpg>

LWSQUAREDPHOTO

"Haar Chic Duisburg"
Calendar 2008
Preview

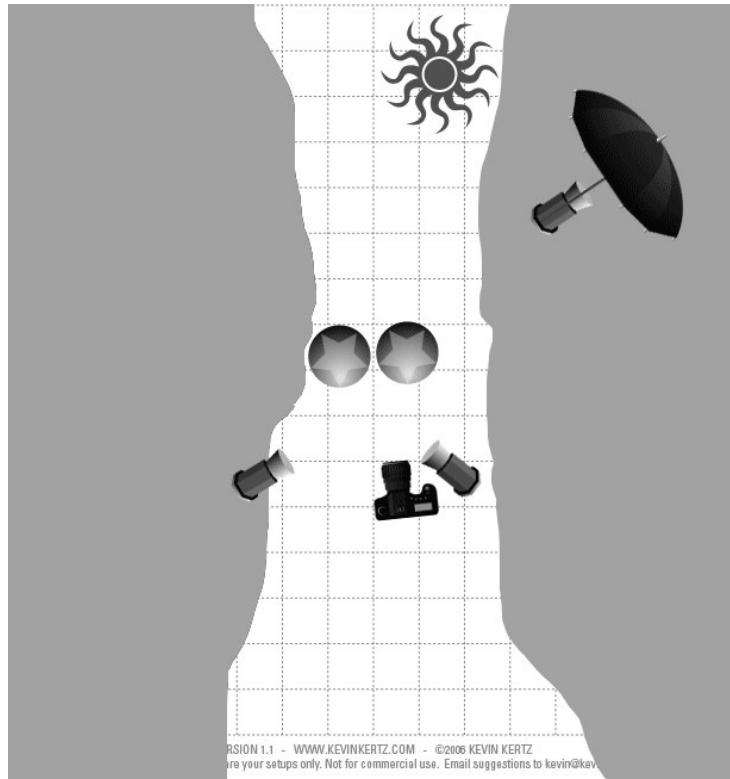


PHOTOGRAPHER
[Marco Aureliani](#)
Male
Location: Italy
Posts: 353

My fav topic ever, thanks 😊



PHOTOGRAPHER
[Gary James](#)
 Male
 Location: Florida
 Posts: 133



Sorry for all the tags its a commercial proof so i have to protect it

[first](#) [10](#) [11](#) [12](#) **13** [14](#) [15](#) [16](#) [17](#) [last](#)

[main](#) | [browse](#) | [forums](#) | [shout box](#) | [info](#) | [my stuff](#) | [logout](#)

©2006-2007 ModelMayhem.com. All Rights Reserved.
[Terms](#) | [Privacy](#) | [Internet Rank](#)